

Great Missenden Local Community Area Profile



Content

Introduction	Page 1
Map	Page 2
Local Government Geography	Page 3
Population and Household Characteristics	Page 4

Introduction

This Local Community Area Profile is the first of a set of evolving documents that provides customer intelligence information about the people living in Buckinghamshire. By gaining a better understanding of the residents living in our communities, public sector services can be delivered in more effective ways. This ethos forms the backbone of our corporate needs assessment project covering 19 Local Community Areas of which the Profiles are the first stage.

The Profile includes a map depicting the Local Community Area as well as a list of the local government administrative building blocks covering the area.

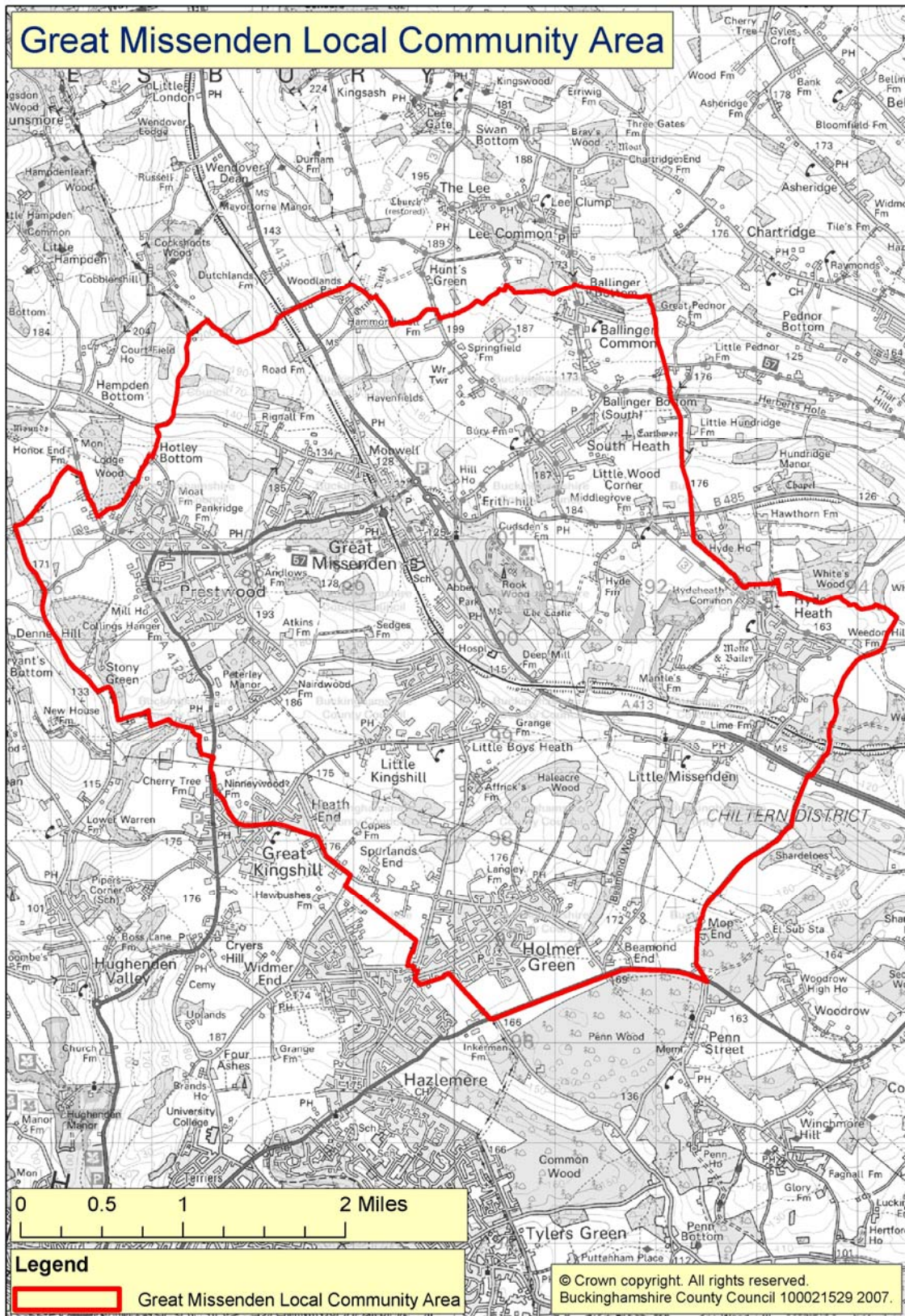
Customer intelligence information, comprising nearly 200 different population and household indicators, is shown as bullet point commentary and illustrated with charts. The information for the Local Community Area is placed in the context of Buckinghamshire to get a better feel for the area. The Profile should be read alongside the accompanying full set of data and charts presented in the Excel file 'Great Missenden.xls'.

Much of the information relates to the 2001 census but also includes 2004 Indices of Multiple Deprivation data and 2006 based income, employment, acorn¹ and schools related data. Definitions of the information used in the Profile can be found in the accompanying document 'Sources Definitions of Data.xls'.

The Profile has been written by the Chief Executive's Policy Team. Further detail about the corporate needs assessment project can be obtained from research@buckscc.gov.uk.

¹ Acorn stands for A Classification of Residential Neighbourhoods. Acorn has been developed by CACI and is a market segmentation system combining geography with demographics, consumer behaviour, social factors and lifestyle information to create 5 categories, 17 groups and 56 types.

Ordnance Survey Map of the Local Community Area



Local Government Geography

This section looks at the local government administrative building blocks comprising the Local Community Area. Please note that some electoral divisions, wards and parishes may straddle more than one Local Community Area. Where this occurs the Local Communities affected are listed in brackets.

Electoral Divisions (ED):

Chiltern Ridges ED (Chesham and Great Missenden)

Great Missenden ED

Penn, Coleshill and Holmer Green ED (Amersham and Great Missenden)

Civil Parishes (CP):

Great Missenden CP

Little Missenden CP

Wards:

Great Missenden Ward

Holmer Green Ward

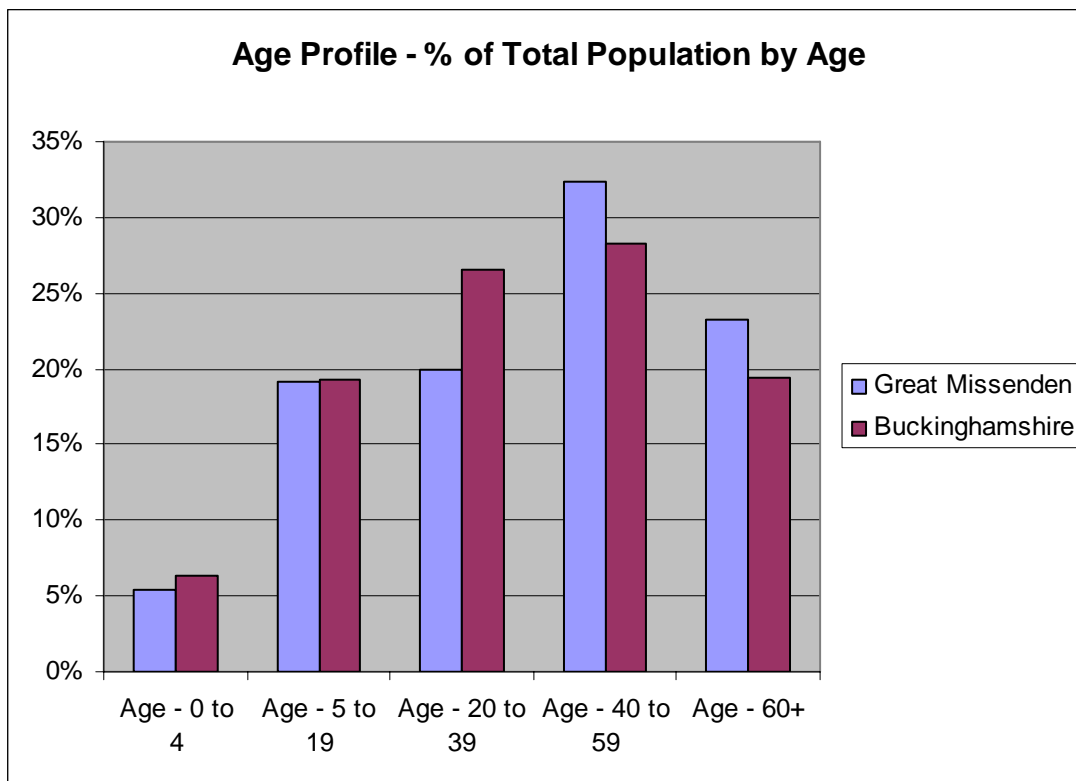
Little Missenden Ward

Prestwood and Heath End Ward

Population and Household Characteristics

16,500 people live in this Local Community Area in 6,400 households. The size of Great Missenden is smaller than the average Local Community Area which is 25,200. The population in each Local Community Area varies from 7,900 to 69,300.

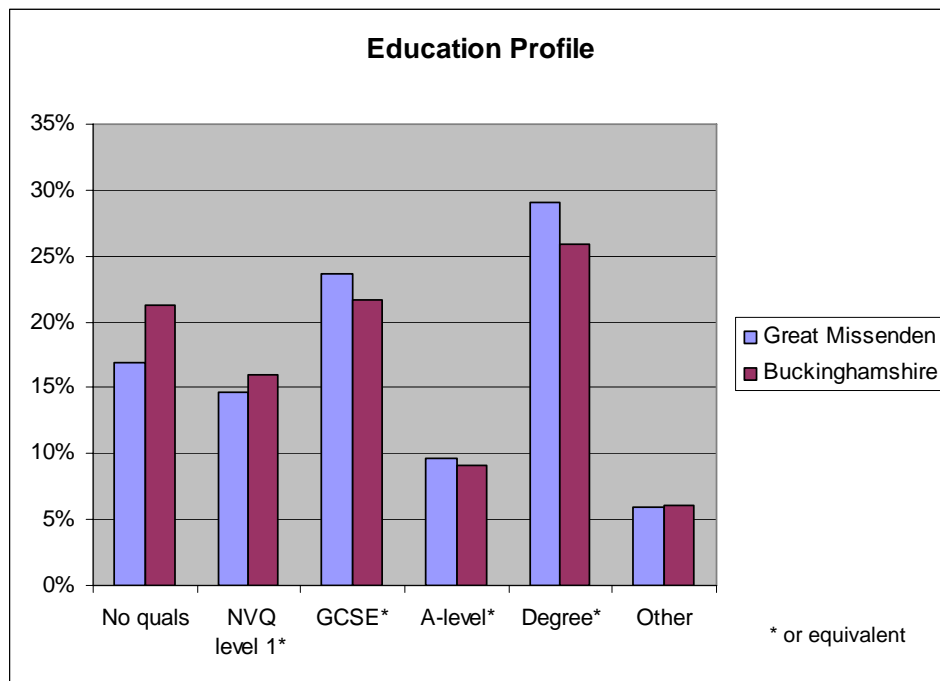
The age profile of Great Missenden is older than average and is more rural than average. 70% of the population lives in rural areas compared to the average of 35%.



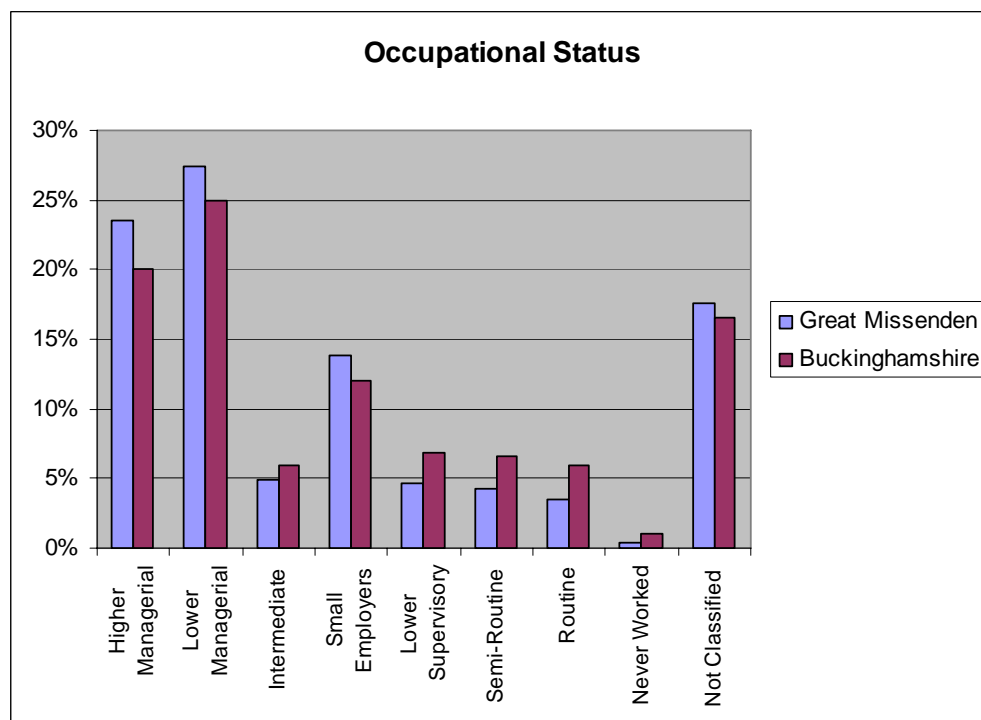
Great Missenden's population has a slightly greater proportion of people from the white ethnic group (98%) and those holding Christian religious beliefs (77%).

The health of Great Missenden's population is slightly better than average with 88% of people reporting no long-term limiting illness.

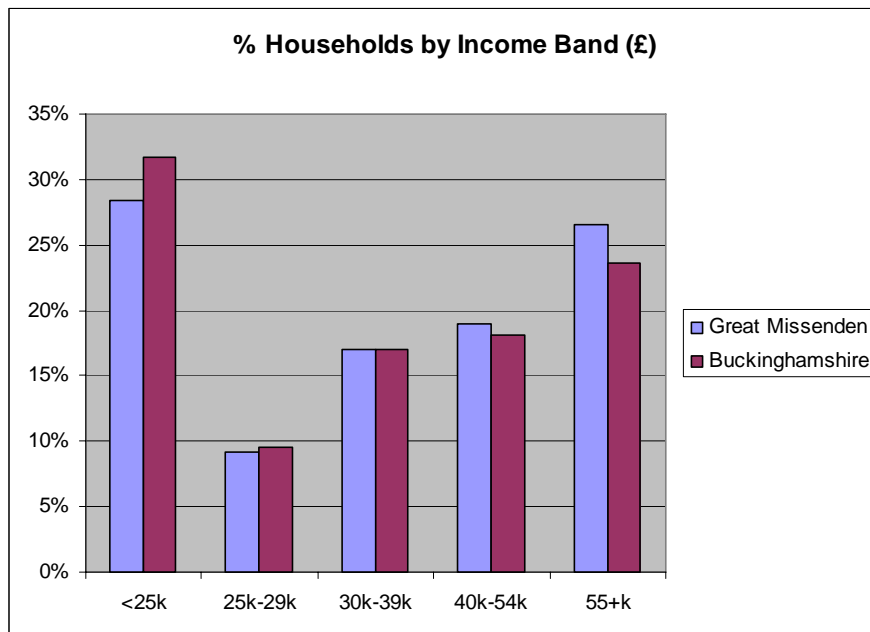
The educational profile of Great Missenden is high with 29% of its population qualified to degree level, above the average of the 26%. The proportion of pupils achieving 5 or more A*-C grade GCSEs is high, 76% compared to the average of 69%.



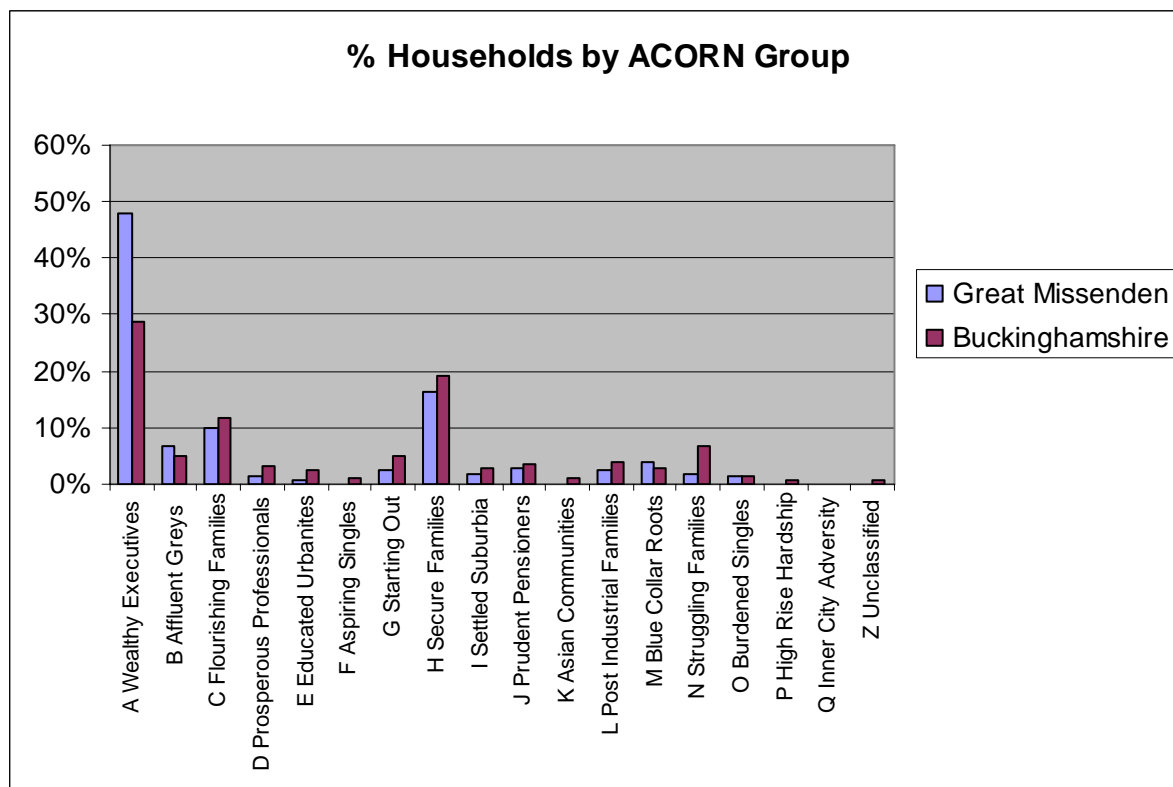
Unemployment is low accounting for 2% of the population and half its population is employed in the Higher and Lower Managerial & Professional Occupations. Great Missenden has above average proportions of population in these occupational groups.



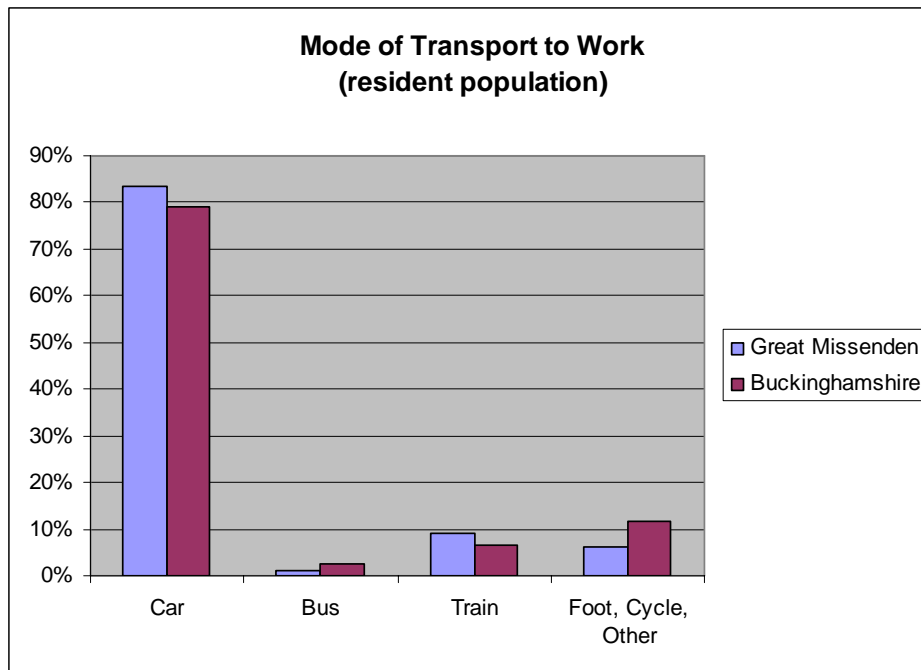
Great Missenden's average household income is over £43k which is above the Buckinghamshire average of £41k and sits in the middle to upper end of the range by Local Community Area, £37k to £46k. Great Missenden has above average proportions of households in the upper income bands.



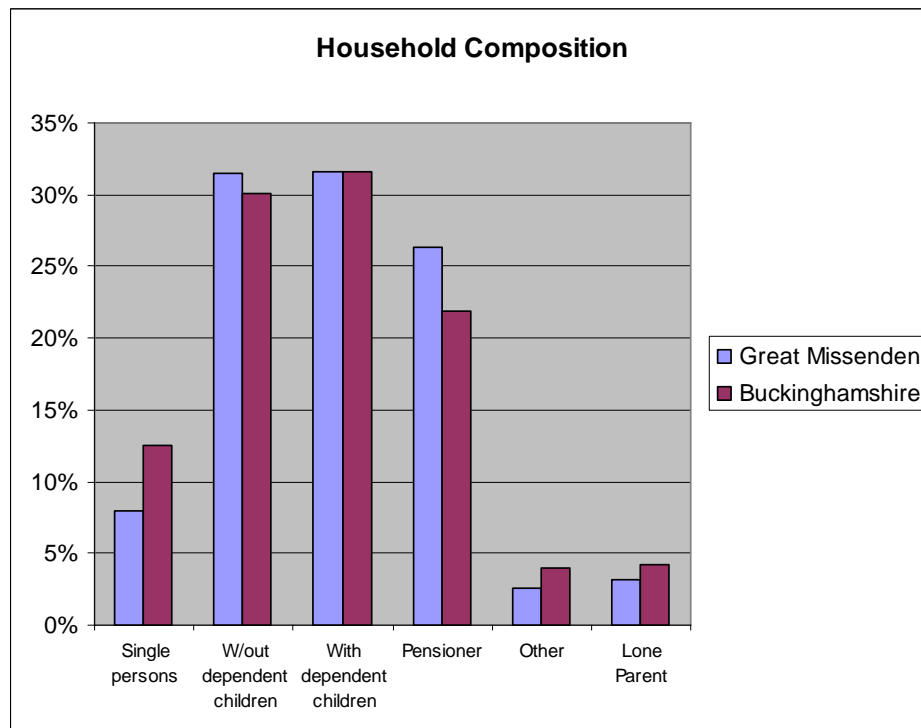
Almost half of Great Missenden's households are classified by acorn as 'wealthy executives', well above the Buckinghamshire average of 29%. 'Secure families' is the next largest acorn group accounting for 16% of households.



The car ownership levels in Great Missenden are above average with 90% of households owning 1 or more cars, compared to the average of 87%. The majority of people travel to work by car although a larger than average proportion also travel by train.



Great Missenden's household composition is similar to the Buckinghamshire average with over 60% of all households occupied by couples, split in half by those with and those without dependent children. Great Missenden has below average proportions of single person households, in fact it has the smallest proportion of all the Local Community Areas. Great Missenden has a slightly greater proportion of pensioner households than average, 26% compared to 22%.



Great Missenden has above average home ownership levels and has well below average proportions of population living in areas affected by deprivation.

