



Great Missenden & Prestwood Revitalisation Group
incorporating Ballinger, South Heath and Heath End

Annual General Meeting
28 March 2019



Great Missenden & Prestwood Revitalisation Group
incorporating Ballinger, South Heath and Heath End

Agenda

Welcome & Introduction - Carole Eaden, GMPRG Chair.

GMPRG Team introductions & apologies

Adoption of minutes of last AGM held on 22 January 2018 & matters arising.

Election of Management Committee, Chair, Treasurer & Secretary.

Financial Report - Treasurer

Chair's Report

Future plans

•

GMPRG – Accounts 2017/18

	Total	General Funds	Bike Parking	Prestwood Village Centre	Community Vision Update
Opening Balance 1 July 2017	£6,924.22	£5,163.72		£1,760.50	
Income	£8,412.39	£2,000.00	£3,340.00	£40.50	£3,031.89
Expenditure	-£3,168.79	-£450.08	-£148.72		-£2,569.99
Closing Balance 30 June 2018	£12,167.82	£6,713.64	£3,191.28	£1,801.00	£461.90

Tonight's AGM is being asked to approve a new Treasurer, Robert Gibson.

The slide shows an abbreviated version of financial movements during 2017/18.

Starting the year, £5,164 was available for general projects. This is not intended as a financial buffer, but is money that is available to be used strategically, in particular for matched funding. £1,760 was held for potential further work on Prestwood Village Centre.

During the year, in addition to the £2,000 grant received by 'Revite Groups' from Chiltern District Council, funding was sought and received for bike parking projects and for the Community Vision update.

Funds at the end of the year were £12,168, and the columns show clearly what these funds are held for.

GMPRG – Accounts 2017/18

Sources of Income:

- **Chiltern District Council:** £2,000 -Annual grant, £2,000-Bike parking, £500-Community Vision
- **Bucks CC:** £1,090-Bike parking, £2,532-Community Vision
- **Midcounties Coop:** £250-Bike parking
- **Community Lottery:** £40.50-Prestwood Village Centre

Expenditure:

- **Website:** £,1781-Dovedale Design (as part of CV Update) and 1 & 1
- **Coop cycle hoops and signage:** £149
- **Community Vision:** Meetings -£478, HP16 The Source-£600
- **AGM:** £161

This slide adds some flesh to the bare numbers.

GMPRG is very grateful to all its partners and funders.

Activities February 2018 to present

- Updating the Community Vision to prioritise projects
 - New GMPRG website
 - Consultation
 - Workshops
 - Discussion Groups
- Obtaining grants for funding -
 - Secure bike parking in Parish- new stands in Prestwood
 - Seating area in Prestwood
- Comments to Fusion regarding HS2 Enabling Works
- Improvements in Great Missenden-
 - Working with GMVA & Councillors on project- HS2 BLEF funding
- New Community Notice Boards

Here's a list of what has been happening since the last AGM

The group's first task was to have a strategy for projects going forward.

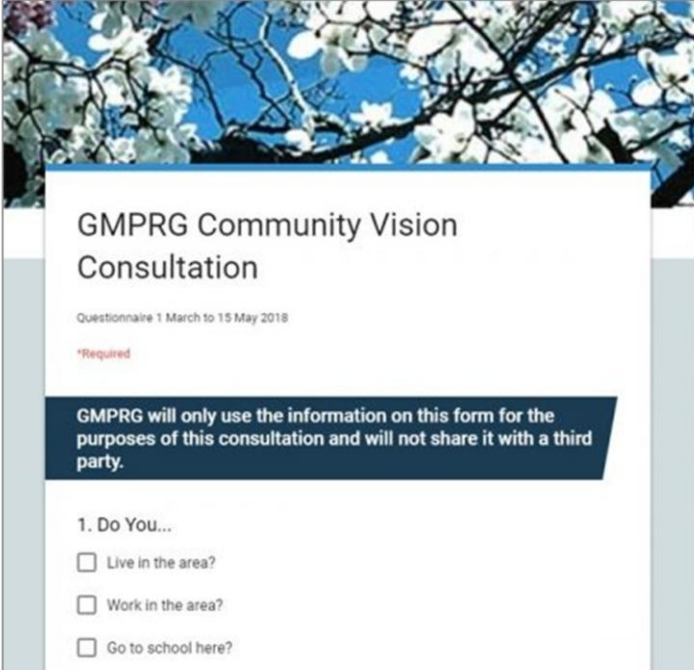
The Community Vision of 2008 provided some evidence of what was needed but was somewhat out of date.

It was time for a refresh, to check what in the Action Plan was still relevant and what new issues should be added.

A community consultation was need.

We've been keeping a watch for funding opportunities and applying where it seemed fit and also trying to get more collaboration between local groups in order to get projects underway.

New Website with Google Forms



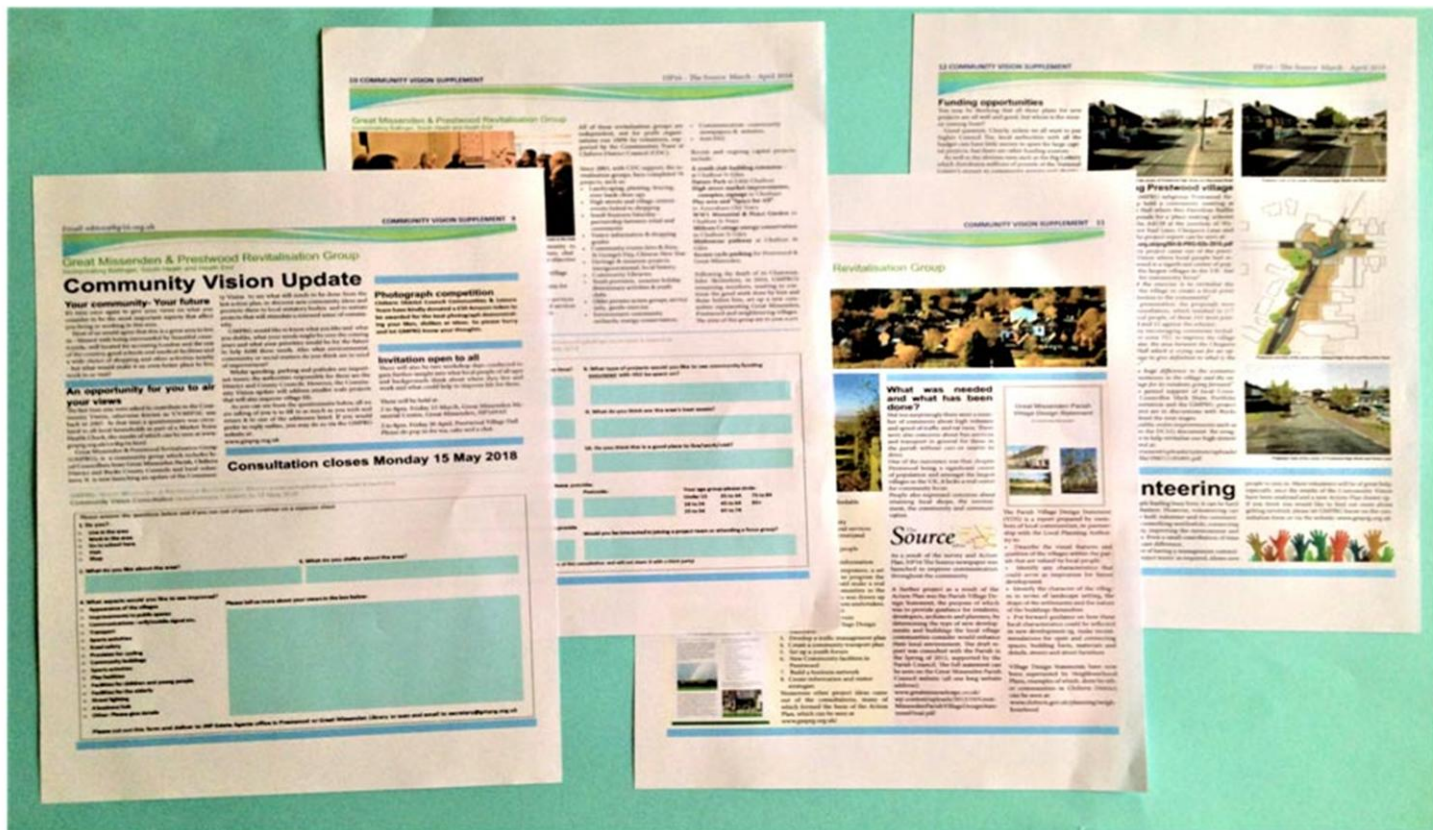
The image shows a screenshot of a Google Form titled "GMPRG Community Vision Consultation". The form is set against a background of white blossoms on a blue sky. The title is in a large, bold, black font. Below the title, the text "Questionnaire 1 March to 15 May 2018" is displayed in a smaller font. A red asterisk followed by the word "Required" is positioned above a dark blue banner that contains the text: "GMPRG will only use the information on this form for the purposes of this consultation and will not share it with a third party." Below the banner, the first question is "1. Do You..." followed by three checkboxes: "Live in the area?", "Work in the area?", and "Go to school here?".

With funding from Bucks County Council Area Forum and Chiltern District Council, the group set about-

firstly updating the GMPRG website to a new site that could provide a Google forms version of the Consultation Form and

updating details about the group.

Community Vision Update



The next step was the launch of the Community Vision Consultation via a four page supplement in The Source, delivered to every home in HP16.

As well as the form, the supplement had details about the group, projects done by the 7 Revitalisation Groups within the District and GMPRG projects, past and present and ideas for future ones.

Copies of the consultation form were also available in the Library and JNP Prestwood and Prestwood Village Association also ran a number of news items promoting the consultation.

Workshops- Prestwood, Great Missenden , Ballinger and PVA AGM

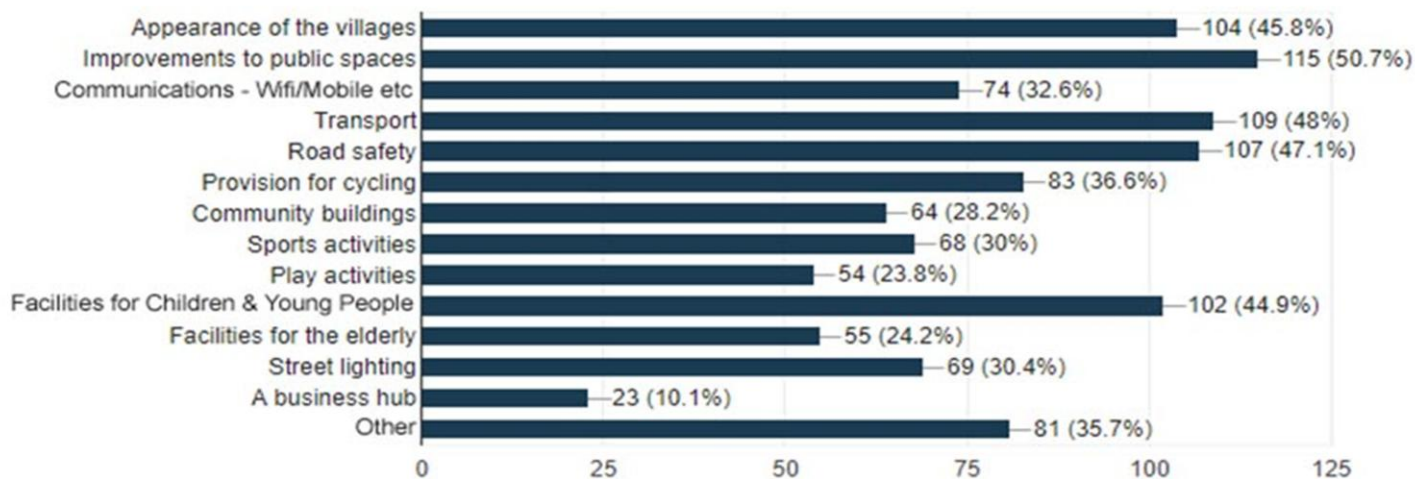


Then there were workshops held in Great Missenden, Prestwood and Ballinger giving the community the opportunity to drop in for coffee and cake, to look at the visual stimulus material we had prepared and to give their opinions.

Community Vision Update 229 Responses

4. What aspects would you like to see improved?

227 responses



As a result of the consultation, 229 responses were received from a broad age range of local people.

The quantitative question 4. gave 14 options for people to express their preference as to what aspects of the area they would like to see improved:

The top priority was 'improvements to public spaces, closely followed by transport, road safety and appearance of villages.

Community Vision Update



Within the forms, we received a vast array of qualitative ideas and comments.

In reply to the question – “What would you like the area to look like in 10 or 20 years time”, most respondents stated that they would like the area to retain “a rural village character”; other popular responses were in favour of “attractive green spaces”, “more amenities and facilities for all” and “a good community spirit”.

Again the need for attractive, thriving villages, served by better public transport was on many people’s wish list.

Discussion groups

Prestwood November 2018 and Great Missenden February 2019



In order to get more detail on these wishes, we held two discussion groups; one in Prestwood and one in Great Missenden.

These were attended by over 50 people who all enthusiastically contributed to the six identified priorities.

Bike Parking

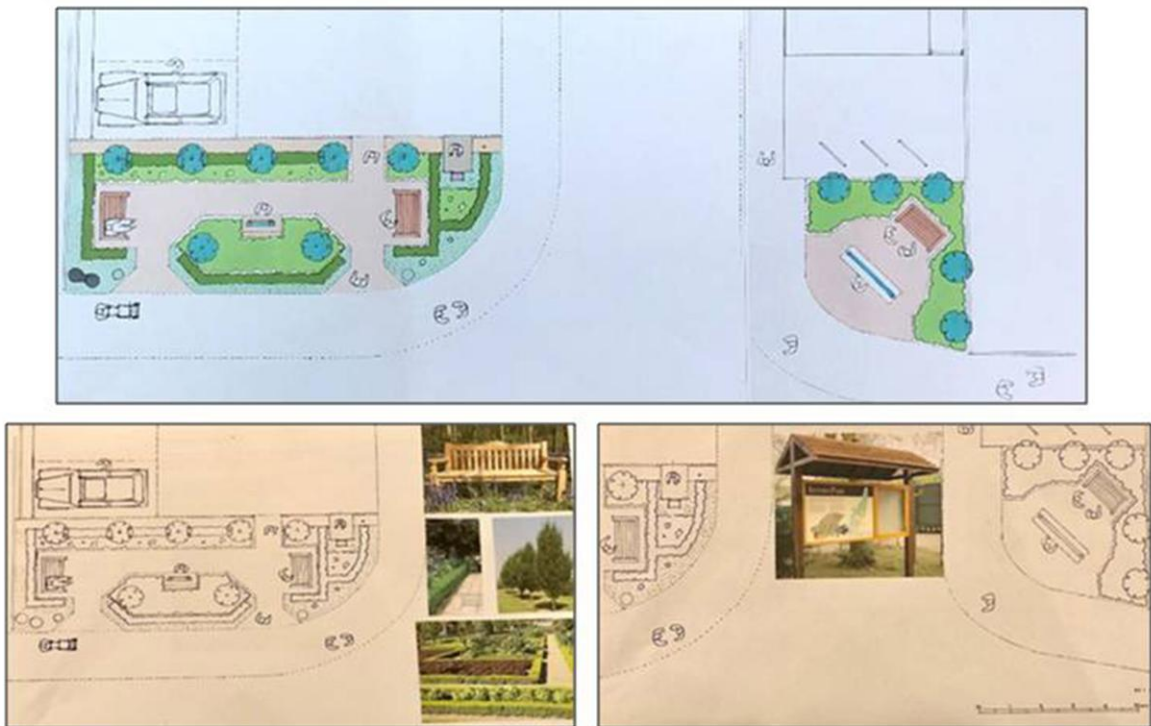
Prestwood Car park and Mid Counties Coop



Whilst all this was happening, in response to a need identified by a local resident who had found that there was no secure bike parking in Prestwood to encourage people to cycle when popping to the shops etc, the group set about to resolve this.

With funding from Midcounties Co-op Community Fund, Chiltern District Council and Bucks County Council Local Area Forum, three shiny new bike stands are now in place in Prestwood Car Park and the Co-op.

Public Space Projects



As a result of BCC cutting down a rather nice tree on the grass area at the front of Prestwood High Street Car Park, we first set about trying to get a bench and some planting for this area.

Local architect, Trevor Davison, offered to help survey and draw up a design for the area – here is the result, above.

As you can see it will become a small 'park' making the most of one of the few areas of green space in the village.

We now have funding from Midcounties Co-op, CDC Revitalisation Capital Fund and the offer of the donation of benches and discount on trees and plants from Richard Hildreth., so hope to start this project very soon.

Comments to Fusion

Creating a 'gateway' to Great Missenden by wild flower planting



In the spring of last year the community was given the opportunity to make comments on Fusion's, (HS2 Ltd's contractor), plans for the Haul Road off the Link Road roundabout.

From the Community Vision workshops, we were aware that local people were very much in favour of wildflower planting.

In an attempt to create an attractive 'gateway' to the village, and to detract from the eyesore of the haul road, GMPRG proposed wildflower planting around the roundabout.

Also road calming measures for traffic approaching the Link Road from the A413, new village entry signs and that the unsightly nettles etc, along the boundaries of grass verges be replaced by hedgerows to create wildlife habitats.

The full list of comments can be seen on our website – gmprg.org.uk.

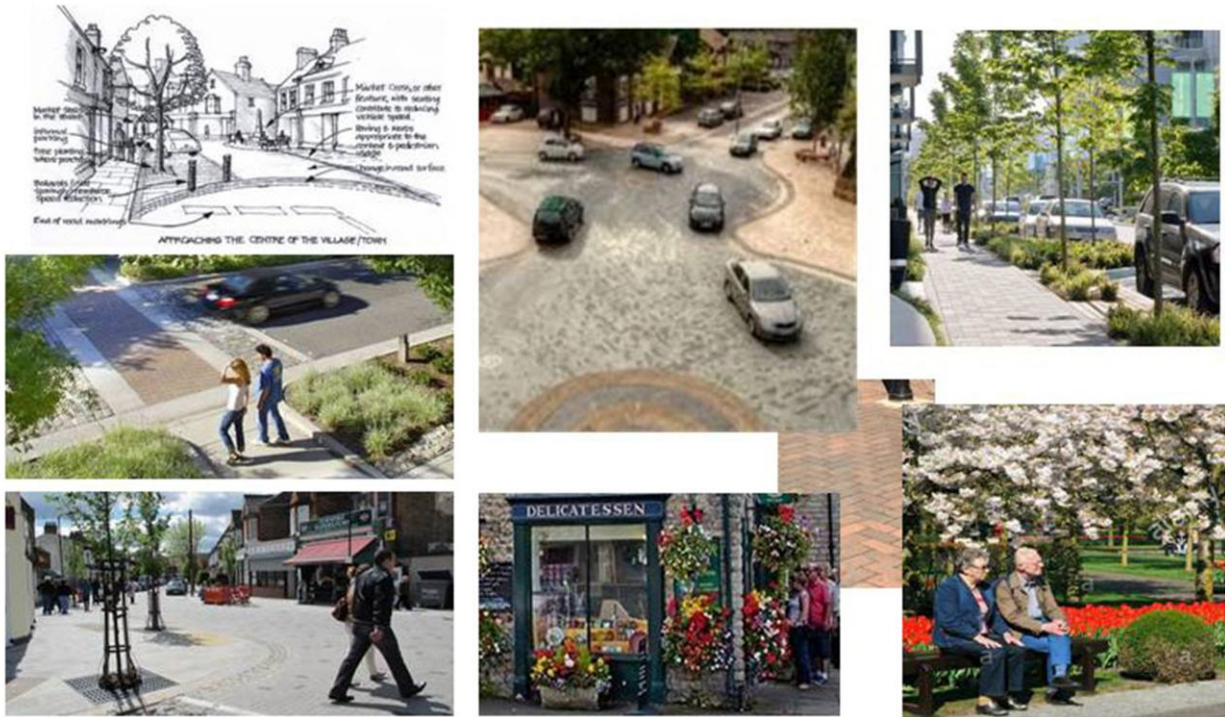
Great Missenden in need of improvement



As a result of budget cuts and lack of maintenance Great Missenden has become rather tired looking and in need of a face lift.

Working as part of a committee of local groups looking at what local projects might be suitable for funding from the HS2 Community and Business Funds: GMPRG, in conjunction with GMVA and our Bucks County Councillor, Peter Martin, started to look at what improvements could be made to help local businesses and Great Missenden a more attractive and welcoming place for residents and visitors during the construction period.

Hs2 Business & Local Economy Fund – Great Missenden Improvements



So with the help of a Highway designer we have 'gone back to the drawing board' to see what can be improved.

Here are some examples of improvements such as more attractive surface materials, informal crossing places, decluttering and tree planting, to make the village centre not only more aesthetically pleasing, but also safer by reducing traffic speeds.

New Visitor Notice Board In Great Missenden



One item in Great Missenden that has become rather tatty is the GMPRG notice board between the Link Road and the Library.

This, and an outstanding need from the Community Vision of 2008 for a visitor centre, prompted the group to help resolve this problem by having a new notice board with an illustrated map and details about the area.

It will also have a window for up to 8 A4 notices for local events.

GMPRG and GMVA are working together on this project along with the Roald Dahl museum, and now have funding for this project to go ahead.

What's Next?

Set up new project groups –

- Public Transport
- Cycling
- Public Space improvement
- Road Safety
- Facilities for children and young people
- Communications

Following on from the Community Vision Update, the next stage is to set up new project groups for each of the main priorities.

Here's a list of them.

Chairman of Prestwood Village Association, John Cadman, who has been working with us on the discussion groups and is particularly interested in improving public transport locally to share his thoughts-

Followed by Parish Councillor and GMPRG member Mike Johnstone who is going to talk about the cycling group.

Public Transport Project Group

OBJECTIVES

- To identify the existing demand for improving existing public transport within Great Missenden parish during peak hours and off-peak hours.
 - To identify possible solutions to meet that demand (eg. improved public buses, community bus ,links with existing taxi firms, car share, “dial-a-ride”, bus/train integration etc).
 - To get an overview of financial viability of the options, including public bus finances via councils, and the significance of cost to the users.
 - To consult with local transport providers on ways to meet the identified demand.
 - **OPTION:** To assess demand for expansion of local public transport (eg. to outlying local areas, access to Chesham, Amersham, Aylesbury, Heathrow etc)
-

Chairman of Prestwood Village Association, John Cadman, who has been working with GMPRG on the Community Vision discussion groups and is particularly interested in improving public transport locally.

Here are his thoughts-

Public Transport-

RESOURCES

- GMPRG leadership and communication with other stakeholders (Councils, service providers, village associations etc) where appropriate.
- Volunteers to form project group to plan how to meet these objectives.
- Integrate with local village associations, schools (including PTAs), councils and other volunteers to move things forward.

Public Transport-

QUOTE FROM PREVIOUS FOCUS GROUP TO BEAR IN MIND-

“ It is too late – people have got used to having a useless service and would not trust it.”

JC comment –

Negative and disappointing though this is,
a lot of people would probably agree.

Needs to be part of the project to counter lack of confidence.

Cycling Project Group

1.) Concerns



2) Some suggestions

2.1) Safe cycling routes

Prestwood to Kingshill

The Misbourne Greenway -championed by The Chiltern Society

A cycle surface along Trafford Road

Parish Councillor and GMPRG committee member , Mike Johnstone, heading up the Cycling Project Group presented a number of ideas for potential improvements.

Cycling

2.1) Safe cycling routes – (continued)

- Great Missenden to
Prestwood



2.2) Off-road safe cycling-

- Mobwell to the Link Road
- For children to learn to cycle – GM Station, Greenside,
- Cycle path around Prestwood common

2.3) Cycle parking-

- Need anymore ?
- Link Road side of GM library?



Cycling

3) Objectives:

- To promote safe cycling within the parish and the AONB
- To decide on projects which are achievable and sustainable

4) over to you !

- Anymore suggestions for safe cycle routes?
- Priorities?
- Who wants to join a cycling project group? –



lycra not required!

Public space projects-Hampton's 'Hump'



From the community vision responses and the discussion groups we know that generally tidying and putting in trees to create soft landscaping would be welcomed .

Improving the area of the 'Hump' outside Hamptons has certainly been suggested by many.

So with help from committee member and local architect Ken Brown here, in the tradition of architects, such as Norman Foster who designed and named 'The Gherkin', is 'The Egg'.

A brick built raised planted area , planted with a split trunk silver birch and under planted with ornamental Japanese grass and flowering bulbs .

Public space projects Prestwood Village Centre



Many of you may recall this design proposal to create a village centre for Prestwood. From the public consultation we know that the project has local support and has been well received at a senior level in BCC.

We still have some funding in place towards the next stage , but until we can identify a source of funding to implement the design, we really can't make any further progress, but are still working on it.

Also, we would like to make it clear that this is a 'place making' scheme, not 'shared space'. None of the kerbs are to be removed. Working with Highway designers, GMPRG will continue to look at the possibility of slightly changing the road layout and using surface materials that will make the area safer for all road users and create a focal point to the village.

GMPRG Future plans

To get things done we need –

- More people to set up or join project groups
- Specialist skills
- Funding

Would you like to help/get involved?

Here's the list of what is needed if we are going to get things done-

- **More People**
- **Specialists skills** – maybe helping to plant some trees, or arrange a fund raising event or you might be a surveyor, a highway designer or have some professional skill that is needed.
- **Funding**

No matter what your skills may be, time and enthusiasm are all that is needed!

So if you would like to get involved in something that would help to make this a better place to live, all you have to do is let us know.