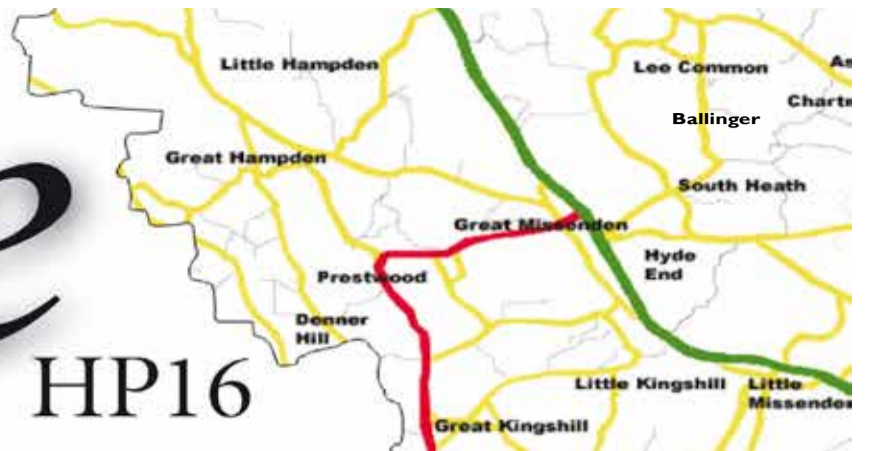


The Source



Also available at www.hp16.org.uk

HP16

The FREE Community Newspaper for HP16

Issue 53, March / April 2018



p3 COMMUNITY NEWS



p8 WELLBEING



p15 BUSINESS



p16 EVENTS

Village Cup winners 2018

The 2018 winners of the Village Cup are three well known and much loved ladies from Prestwood, Val Corteen, Anne Hunt and Margaret Lewis. They were presented with the cup by Anne Hewett, Chairman of the Parish Council. Together they have spent nearly 40 years working within Prestwood for local charitable causes too numerous to list. They have become an inspirational and respected force for the good of their village. They are well known in Prestwood for their strength, compassion and wonder-

ful sense of humour. Their annual 'Christmas Carol Concert' has become a traditional festive celebration over the last 35 years. They would be the first to say they have been supported by their families and members of the two Prestwood WIs. December 2017 they announced would be their last show and will be sadly missed by the Prestwood families for whom Christmas traditionally starts with their hilarious sketches mixed in with well known and loved carols and festive songs.



(left to right) Anne Hunt, Val Corteen and Margaret Lewis and with the GMPC Village Cup 2018

New guide to services for older people in HP16



The editor and designer of The Source, working with Chiltern District Council and a small team of researchers, has refreshed the 64 page booklet that was produced in 2014. Then 500 copies were printed and circulated to older people and organisations. This time it has been decided that every house in the area should receive a copy in order to enable everyone to be good neighbours to those in their street or friendship circle. 5000 copies of the guide will be printed, funded by The Source, Chiltern District Council, the Parish Council and a number of generous donations. A copy of the guide will be delivered by the Royal Mail through your door in the next two weeks. Please watch out for this so that you can put it in a safe place. A number of large print copies will be available, and if you need one please contact Colin Veysey on 01494 862257 or email: cvkingsp@aol.com

Dai's amazing station displays



Dai, our brilliant station ticket officer

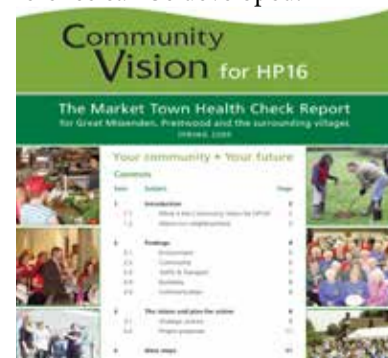
"I do it for fun. To brighten up the place," says Dai, ticket officer at Chiltern Railways Great Missenden Station. Three or four years ago a friend gave her a wooden locomotive filled with plants. As the plants died, she replaced them with seasonal bits

and pieces and made a display. Now her displays have become something of an institution. She rings the changes several times a month. February saw the start of the Six Nations Rugby (pictured) followed by Valentines Day and the Chinese New Year. She even takes commissions, having made displays for Blue Door Cinema and to celebrate the centenary of the WI. Dai lives in Aylesbury and has worked at the station for 11 years. "I love this station and like to see it looking nice", she says. The hanging baskets in spring and summer are also her idea, she plants them up and makes sure they're kept watered.

Community Vision for 2018

The centre 4 pages of this paper are a supplement which include a survey questionnaire that we want everyone to fill in. This is your opportunity to make a significant impact on how the strategy for the future of this area is developed. The survey can be filled in on-line at www.gmpg.org.uk or on the form provided and dropped in to the Library or JNP Estate agents in Prestwood. The Great Missenden and Prestwood Revitalisation Group is doing this to provide evidence of what the community considers important. From this the aim is to seek funding, plan, initiate and manage projects on behalf of, and for the benefit of, the area and residents. In edition

52 page 2 (see www.hp16.org.uk), an article suggested some issues that might be important to you and this is your opportunity to have your say. Please join in so that a good evidence base can be built and projects that will really make a positive difference can be developed.



Deadline for submissions and advertisements for our next edition, Issue 54, is Tuesday 6 April 2018

Contents and Contacts

Council news – page 2
 Community and Christmas - page 3
 Arts – page 4
 Education & Arts– page 5
 HS2 & Environment – page 6
 Environment – page 7
 Wellbeing – page 8
 Community Vision survey - pages 9-12
 Sport and Leisure – page 13
 Church & Charity – page 14
 Business – page 15
 Events – page 16 & 17
 Puzzles – page 18
 Source Youth – pages 19 & 20

Editor: Colin Veysey tel: 01494 862257

Youth Editor:

Holly Burrows: hp16thesource@yahoo.co.uk

Reception desk: editor@hp16.org.uk

Directors

Colin Veysey (01494 862257) and

Anthony Sykes (01296 620830)

would like to thank the growing number of people who contribute in many different ways to make this enterprise a success. Your time and talents are very valuable and much appreciated.

HP16 The Source

c/o Anthony Sykes, Mayertorne Cottage

Wendover, HP22 6QA

Website: www.hp16.org.uk

Email addresses:

Editorial: editor@hp16.org.uk

Advertising: anthonySykes000@gmail.com

Events: events@hp16.org.uk

© HP16 CIC. It is our policy to correct any errors in print. If you find an error of fact in these pages please let us know. We will carry any corrections or clarifications at the earliest opportunity. While every care has been taken to ensure that the data in this publication is accurate, neither the publisher nor its editorial contributors can accept, and hereby disclaim, any liability to any party to loss or damage caused by errors or omissions resulting from negligence, accident or any other cause.

HP16 - The Source does not officially endorse any advertising material included within this publication. However, we are proud to be associated with businesses in the HP16 area and hope that you will support them.

To protect the rights of authors, we have to state that all rights are reserved. No part of this publication may be reproduced, stored in any retrieval system, or transmitted in any form – electronic, mechanical, photocopying, recording or otherwise. However, if contacted, we are happy to assist you to obtain the rights to use articles or photographs in non-profit situations or arrange an appropriate payment structure for commercial applications.

HP16 – The Source is independent and non political. We thank all our contributors for their submissions, however, views expressed do not necessarily reflect the views of the editors.

Registration No. 6338762

This community newspaper is printed on 100% recycled paper. Please recycle it again.

Issue 53, March / April 2018

Driving fine

Some are driving fine others risking driving fines, or worse!

Residents living in the Heath End Road and Spurlands End Road part of the Parish may have noticed the two sets of cables laid across both roads for two weeks last October. These speed tubes, measuring both the number and speed of vehicles passing over them, in both directions, were put in place to provide measurable data, as part of the

on-going review of traffic patterns across the parish by the Council.

Combining the data for both roads confirms that, over the two week period, the fine drivers prevail with 57% of vehicles recorded with speeds at or below 30 mph. However, that means that 43% are at risk of driving fines! At the busiest time of day (8–9am on both roads, 10% of daily traffic) the 'at risk' drivers are even more active with over 50% recorded above the speed limit.

Speeding, and the risk this poses to other road users, remains a concern to residents across the parish. Great Missenden Parish Council

are looking to add additional Moveable Vehicle Activated Signs (MVAS) to cover roads where new speeding hotspots have been identified and increase the frequency of use of existing signs where the data shows speeding on the increase.

As ever, this work requires volunteers to help run the Community Speed Watch (CSW) sessions set up in conjunction with the local police and to move the MVAS units around the parish. If you are able and want to volunteer, please in the first instance contact the Parish Clerk on 01494 864792.

'I'm dreaming of a white...'

A winter night and sleep envelopes you in a warm bed with the temperature plummeting outside. In your mind's eye you dream....

'A deep white blanket covering the world. Setting out with shovel and brush you clear your front path and go on to shift snow from the pavement outside your house (and in the dream you feel good and public spirited). But then you see, in slow motion, an older person fall as they lose their footing by your gate. The awful snap of breaking hip fills your sleeping ears. The dream is turning darker as you realise the person will be needing a replacement hip. The solicitor's letter remarks that you are being sued for every penny you have – and charged with gross negligence. The judge's finger points and you are cast into a deep, dark, dank dungeon.'

Wake up. It won't happen! Parts of the media have blown up out of all proportion a minute risk which applies only to people who clear snow and ice in the most stupid of ways. So long as you don't make an area significantly more dangerous and should have realised that you



What to do? To clear or not to clear.

have doing so, you are at very little risk.

Government advice is that you are unlikely to be sued or held responsible if someone is injured on a path or pavement you have cleared provided that you have done it carefully. The advice is do it early while the snow is loose, don't use water, even hot, which might then freeze, but use salt, sand, ash or grit and pay particular attention to steps and steep bits. Don't be put off from extending your clearance to cover less able neighbours' frontages. Oh, and please give a bit of thought to where you dump the snow you clear.

What's what in local government

Great Missenden Parish Council (GMPC)

GMPC (www.greatmissendenpc.co.uk/) represents Prestwood and Great Missenden and the hilltop villages of Ballinger and South Heath as the first tier of local government.

Most Councillors live in HP16 and all have extensive knowledge and experience of the area over a number of years. All are volunteers and it's non-political. The Chair is a nurse who worked in a local GP practice and now works for a pharmaceutical company. The Chair of the Planning Committee keeps sheep and chickens and her dogs know the area well from being walked to view properties seeking planning permission. A group of councillors who petitioned against HS2 are now working on mitigating the effects on behalf of the parish, especially those living close to the proposed line.

Councillors are elected or co-opted to represent wards. Each has unique skills and experiences and their overwhelming aim is to protect the lovely area in which we live.

Part of the council taxes you pay is distributed to the Parish Council to maintain and manage the assets of the parish, this is known as the 'precept' and the Finance Committee manages the disbursement of this money. The Parish Council owns the allotments; the Buryfields and Memorial Hall in Great Missenden; the Prestwood Community Centre and the common land there. It also looks after the childrens' playgrounds, skatepark, tennis courts and manages other open spaces, trees on estates and lamp posts, with responsibility to pay for electricity for lighting.

Chiltern District Council (CDC)

Councillors on CDC (<https://isa.chiltern.gov.uk>) are elected in local council elections



and represent a political party and a ward. The number of Councillors is based on population. Our local Councillors for Prestwood and Heath End are John Gladwin, Robert Jones and Heather Wallace. Vanessa Martin represents Great Missenden and Peter Jones represents South Heath and Ballinger. Nick Rose represents The Lee (as well as Cholesbury and Bellingdon).

CDC looks after benefits, building control, planning and car parks, including the ones in Great Missenden and Prestwood. It also covers dog control, local elections, environmental health, housing, noise pollution, and pest control. It is responsible for collecting the rubbish and recycling bins and street cleaning.

Bucks County Council (BCC)

The final tier is BCC: www.buckscc.gov.uk

with responsibility for county-wide services including:

- Adult & Children's Social care services and youth services
- The environment: inc. strategic planning, flooding & waste, flytipping, footpaths and rights of way
- Education services including school admissions and school transport
- Transport including infrastructure (i.e. roads, pavements and street lights), concessionary travel and blue badges.
- Economic development
- Libraries
- Registrars and coroners
- Public Health
- Trading Standards
- Country parks

The representative for the ward of Great Missenden (which includes Prestwood) is Peter Martin.

Great Missenden Parish Council is your first point of contact for local concerns.





Prestwood litter picking weekend, 2-4 March

Residents of Prestwood - your help is needed for the forthcoming community litter pick! If you have not yet participated in one of these events, then please consider joining this one. It's a great way of getting to meet other like-minded villagers and very satisfying to see a lovely clean village when the task is complete.

Here's how to join in. Call at Jeanette's house 18 Orchard Lane, off the High Street, Prestwood, Fri, Sat or Sun between 10am and 2pm, to collect a litter picking tool, refuse sacks and

a hi viz top. Please bring your own gloves. It is your choice where to litter pick and you choose when and how much time you give. Gathered rubbish is deposited at a central collection point which is then cleared by CDC on Monday 5th March.

Please tell your local friends and family about this event - bring them along - and if you have children, spread the news through their schools and clubs. The more volunteers we have, the more litter we can clear from our beautiful village. Still not sure?



Wombling in Prestwood Give Jeanette a ring on 01494 866460.

Don't be shy, give Wombling a try! This weekend is being run in conjunction with the nationwide Keep Britain Tidy spring clean event.

Assistance from Great Missenden residents would be welcomed, convening on the Library forecourt at 10.30am. If you are intending to come please let them know via their website: www.greatmissendenva.com

Great Missenden also supporting the "Great British Spring Clean"

From 10.30am-12.30pm on Sat 3 March Great Missenden Village Association will run their litter pick.

Assistance from Great Missenden residents would be welcomed, convening on the Library forecourt at

Little Kingshill Village Society

Little Kingshill Village Society (LKVS) was founded in 1962 with just 30 members, and now, over 50 years later, includes 450 households. Annual membership is £4.00, which includes our Handbook full of up to date information and details of local contacts and services.

Quality of village life lies at the heart of the Society's vision for Little Kingshill and by providing a channel for the voice of the community, they aim to foster a tangible sense of community spirit, belonging and pride.

As a Society they concern themselves with any matter that may have a significant impact on the quality of life in LK. They have made representations to Parish, District and County Councillors on traffic calming measures; safer areas for school

children; and resurfacing of Meadow Cottages and Reyners Green. Last year, they successfully campaigned against Affinity Water's proposals to erect a large pumping station on Windsor Lane. In 2015 they presented to the House of Commons Select Committee in opposition to HS2 and will continue to monitor the construction work as it progresses, to protect the interests of LK residents.

Working with other local interest groups they organise social events to raise funds in support of chosen causes, for example the annual 'Carols at the Full Moon', which last year raised £220 for the Thomas Ball Children's Cancer Charity.

They contributed to the renovation of the War Memorial and, in celebration of the Queen's 90th birth-



day, replaced the old bench on the green at the top of Deep Mill Lane. For the future they will be supporting significant improvements to the children's play area on the Common.

Any residents of LK wishing to join the committee would be welcome. They meet on the first Wednesday of each month. The AGM will be held on 21 March, 8pm at the Village Hall.

For more information please visit their website: lkvs.org.uk, or email littlekingshillvs@gmail.com.

Christmas Tree Collection

Volunteers from Kingshill Baptist Church were delighted to raise just over £3,000 through their annual Charity Christmas tree collection, a mighty sum that will be appreciated by the charities they are supporting.

Five teams pulled trailers throughout both Kingshill villages and Prestwood and took away



Volunteers from Little Kingshill Baptist Church collecting Christmas trees

residents' trees in return for donations towards the Kakunyu School, Uganda and the national charity Child Bereavement UK.

Several tons of fir trees were amassed for delivery to landfill over a furious five hour period, with the event helpfully coinciding with the twelfth day of Christmas. Minister Rev. Martin Hatfield was impressed by the collective energy, organisation and community spirit behind the whole venture. This was the eleventh year that the church has organised this event, with the number of households and charitable giving growing steadily during this time.



Christmas Day celebrations at Great Missenden Baptist Church

Churches Together Christmas Lunch

A big thank you and well done to Mary Spooner and her team who once again organised a lovely Christmas Day lunch in the Baptist Church for people who might otherwise have been on their own. A special thank you to Dave, the gentleman from Milton Keynes, who stepped in at the last moment and took over the cooking duties when the cook had to go home as she was unwell. Over 60 people were served a full lunch with turkey and all the trimmings plus Christmas pud, and entertainment and carol singing led by the Sheppard family. Guests all received a 'goody' bag and returned home after listening to the Queen's Speech.

Rotary Christmas collections

The Rotary Club of Great Missenden & Districts



Santa's sleigh and sweets

Rotary wants to thank all residents who contributed to the Father Christmas float collections during the local tours in the two weeks prior to Christmas. In all over £4,000 was raised and this has been distributed largely to the following charities who provided float collectors:

Bucks Mind, Chilterns MS Centre, Prestwood Evening WI, Lighthouse, Medical Detection Dogs, XP, Great Missenden Walled Garden, Bucks Vision, South Bucks Hospice, 41 Club.

The Christmas Float is part of the seasonal magic for the many children and grown ups who welcome its appearance.

Our thanks to all who helped to make it so successful and possible.



It takes hard-graft at the Malt-Face to make ales this good...

BREWERY ASSISTANT WANTED

Interested in grafting with us?

If so get more details at: www.maltthebrewery.co.uk/jointheteam

MALT VALUES

QUALITY | TEAMWORK | SAFETY | PASSION | PRODUCTIVITY | ACCOUNTABILITY | COMMUNITY



HOME REARED MEATS
LOCAL PRODUCE

Genuine Farm Produce

OPENING HOURS
Wednesday to Friday 10 - 6
Saturday & Sunday 10 - 4



01296 622472 Butlers Cross HP17 0UT

Damon Singers to serenade Prestwood

The 25-strong a cappella choir The Damon Singers will be bringing their vocal skills to Holy Trinity Church in Prestwood on 28 April to help raise funds for a local initiative to commemorate the 100th anniversary of the end of WW1. This will preserve the memory of about 75 men from Great Missenden, Prestwood and Little Kingshill who were killed in the Great War by publishing research on who they were, where they lived, their occupations, and their families.

Founded in 1957, The Damon Singers is one of the Chilterns' longest running choirs and has raised tens

of thousands of pounds for good causes. This will be their first performance in Prestwood. Music Director David Cooke commented, "We're thrilled to be singing in this lovely church so soon after it has been renovated, and we're planning a programme to ensure it will be a night to remember."

Since their repertoire includes music from medi-

eval to modern, sacred to secular, folksongs and popular classics, the concert will offer something for all tastes and ages. Tickets for the performance are £10 in advance or £12 on the door and are available from Saturdays in Great Missenden, the Post Office in Prestwood, and Perfect Pitch in Chesham; or call 07768-566-588.



The Damon Singers A cappella choir



Val Eaton Griffith MBE

This year Val Eaton Griffith MBE will be celebrating her 95th birthday, and can look back on a very full and interesting life.

She was born and brought up in London. At the outbreak of World War II, she enlisted into the ATS (Auxiliary Territorial Service) initially serving with an Anti-Aircraft unit with searchlights in Hyde Park. She was later commissioned, leaving as a Captain at the end of the War. The family had moved to Great Missenden after their Hampstead home was bombed. Later she worked for the cosmetic firm Elizabeth Arden, and has always taken great care of her appearance.

In 1965, Roald Dahl's first wife, Pat Neal, the famous Hollywood actress, suffered a series of strokes in California aged only 39. After Pat's return to her Great Missenden home, she battled to overcome her physical disabilities, having to relearn how to walk and talk. Roald turned to Val for help and she visited Pat every day, providing the stimulus needed to recover much of her power of com-

munication. Val made many trips to America supporting Pat as she resumed her career as an actress in many films from 1968, earning another Oscar nomination and three Emmy nominations. They became devoted friends and regularly made trips to see each other and to holiday together until Pat's death from lung cancer in 2010.

Val became very involved in the treatment of stroke victims generally, at a national level. In 1973, the Stroke Association sponsored her idea to pioneer a scheme using volunteers to help people regain their speech and language skills after stroke: the Dysphasic Support Service. Val worked as part of a teaching team that has developed a series of exercises and games to stimulate the brain. Her contribution was recognised with the award of the MBE in 1977 and she is an Honorary President of the Stroke Association.

Val published a book 'A Stroke in the Family' which is still in print. Kenneth Till, the neurological surgeon, said in his preface:

"This book is small and modestly written ... Here is one more example of the increasing need in modern society for neighbourly help and of the wonderful results which can be obtained."

To a later edition, Val added a section outlining the central philosophy behind her work and the national Dysphasic Support Service which it inspired.

Over the years Val has been a regular member of the congregation of the Church of St Peter & St Paul, and it was at her instigation

A Stroke in the Family

Valerie Eaton Griffith MBE

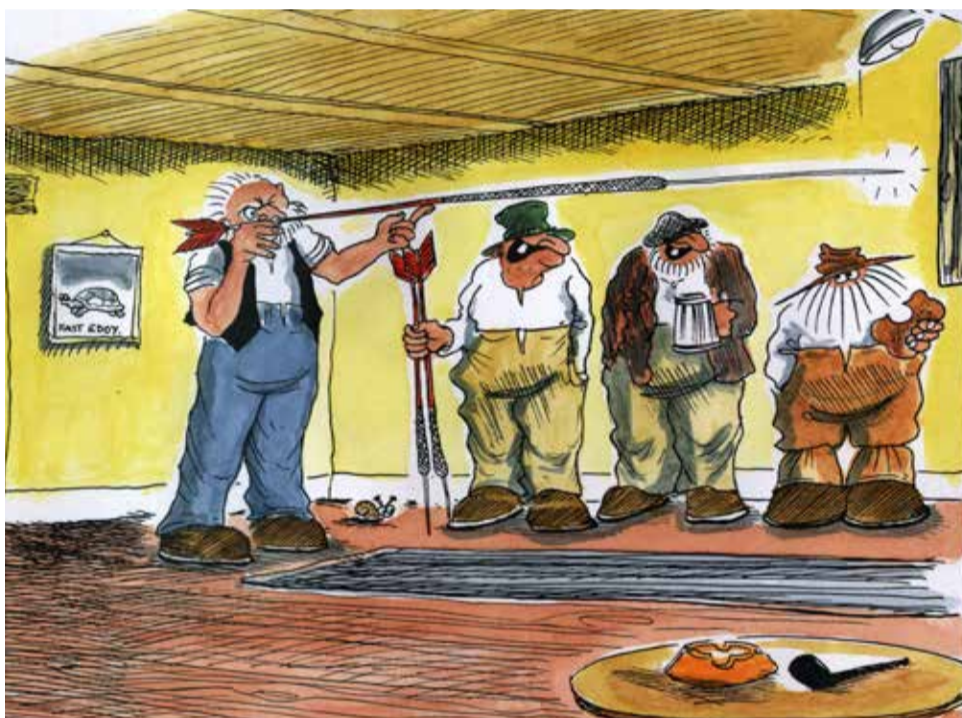


"A manual for the friends and family of all stroke patients everywhere." Roald Dahl

that, with the help of Mike Davis, the Friends of Great Missenden Parish Church was established in 1997, to support the maintenance of the fabric of the church building. She served as its first Hon Secretary and, for the benefit of the Friends she kindly produced two booklets: 'One Hundred Years of Great Missenden', and 'Great Missenden has a story to tell ... and so do the villages!'



Val at the age of 19 yrs old



The Source Cartoon: Dartsmanship - by Lyndon Mallett

Taffin on Balance book review

The plot involves 'StarTrack, a company planning a proposed high-speed rail link in a Westward loop from London. The route cuts through the landscape, through ancient towns and villages, uprooting households and slashing property values. StarTrack is a dirty word locally.'

Sound familiar? Taffin, the strong silent detective of Lyndon Mallett's earlier trilogy, has been asked by locals to investigate this threat. And local writer Lyndon Mallett has found in HS2 a rich seam for his action thriller.

The local MP, a government Minister, is responsible for the fourth change in StarTrack's route. But he is in the pay of a billionaire gangster who has a long-standing vendetta

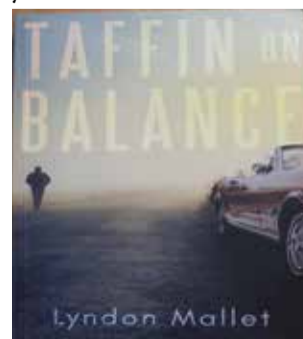
against Taffin. Taffin takes it on himself to 'redress the balance' with his old skills of quiet persuasion. It is a fast moving narrative with rapid changes of scene, from Taffin's classic car workshop in Great Lasherham, to Whitehall, to a country barn full of priceless classic cars. The characters are interesting, particularly the delightfully potty Bob Sherman, but there are a lot of them and the demise of a succession of gangsters causes no regret.

The book has perhaps too many references to Taffin's fame as the hero of a film back in the day - but then the first Taffin novel was made into a film starring Pierce Brosnan.

The big attraction for readers in HP16 is trying to spot the local connec-

tions. For Rookwood and Lasherham, read Prestwood and Missenden. Have fun with the descriptions of the Tollgate Bookshop, the pub and the Post Office, and particularly the description of the protest on the Bury Field.

Unlike HS2 which continues to hang over our area, StarTrack was cancelled. Sadly we have no Taffin to come to our aid but it still makes for a good yarn.



Lyndon Mallett's latest Taffin book



Frances Cutler

HANDMADE CURTAINS AND BLINDS

I make curtains, blinds, pelmets, cushions, valances and all soft furnishings in my garden workroom near Great Missenden. Please telephone or email for an initial consultation and visit my website for further details.

7 Lappetts Lane, South Heath, Great Missenden, Bucks HP16 0RA
Telephone: 01494 862285
Mobile: 07913 097527
Email: francescutler@btinternet.com
Website: www.francescutler.co.uk

The Misbourne Careers and Higher Education Fair 2018



It was great to see so many parents and students interacting with businesses and further education providers at The Misbourne's annual Careers and Higher Education Fair on Thursday 18 January. Several former Misbourne students returned to talk about opportunities in their employment area.

Each year the fair grows a little, expanding the range of careers for students to explore. This year 77 exhibitors were pleased to help the students understand more about their industry, profession and career paths. Misbourne Sixth Form students were on hand to help exhibitors set up displays and guide visitors to the employers that interested them.

For the first time, the fair included four apprenticeship talks that helped update parents and students with the latest apprenticeship information.

Mrs Hill, Careers Lead at The Misbourne, said "students have been using new careers software this term

which ensured that we invited representatives from the careers that were most popular with them. Many thanks to all of the exhibitors who gave up their time to support our students. Feedback included:

"My colleague Jack (who attended) said that it was a very well organised event with great student helpers."

- John Wilson, Southampton Solent University

"It was all good thank you, and we would like to stay on your list of attendees."

- Lorraine Murphy, Day Nursery Amersham & Wycombe Hospitals

"My son and I wanted to attend the talk on apprenticeships. It was really informative and has certainly given him some food for thought. He was also able to talk to several exhibitors about degree apprenticeships. I would like to say thank you on his behalf."

- Mrs G Smith Parent and member of staff

"The Careers fair was very impressive, I very much enjoyed it" - Richard Collins, ecobrand.



Viking raid at Prestwood Junior School

Prestwood Junior year 5 Viking day

Recently one might have thought that Prestwood had been invaded, as children headed to school in costume. They all looked fantastic and even the teachers joined in with their costumes too.

The company 'Portals to the Past' provided a friendly Viking to give the children a day experience of the Vikings. The first surprise was to learn that the Vikings, contrary to popular belief, did not have horns on their helmets! The day began with a round up of history, with plenty of opportunity to boo

the Anglo Saxons and cheer the Vikings. Surprise number two was that the word Viking is actually a verb - to go Viking; meaning to raid and attack another place. This was followed by a quiz where the children learnt more about Norse Gods, writing, runes and what the Vikings ate. They also spent time in the classroom; solving Viking riddles or kennings and learning to play a fox and goose game which was quite similar to draughts.

The highlight for many was weaponry and armour

in the afternoon. The use of axes, shields and other deadly devices was described and the word 'sword' was banned. Many had made their own cardboard weapons, which were put to good use as they practised blood curdling battle cries. Rather than a battle, the two sides, 5 Elgar and 5 Britten, then challenged each other to some games to test their strength. Finally, a circle was formed to teach about the burial rites of Viking kings, with lots of audience participation.

It was a fascinating period of history and an excellent teaching topic and the children certainly enjoyed their day.

Great Missenden CE Combined School Medical Detection Dogs

Great Missenden School's sponsored charity for the first half term was 'Medical Detection Dogs'. The charity trains dogs to assist people who manage complex health conditions, such as diabetes. The lovely dog Isla and owner came to school assembly on 23 January to tell us all about the charity. The School raised over £340 for the charity by having an animal themed Mufti Day in exchange for a £1 donation.



Medical detection dog visiting GM CE Combined School

Inspection grades school outstanding

On Tuesday 16 January, Great Missenden Church of England Combined School had their SIAMS (Statutory Inspection of Anglican & Methodist Schools) inspection which takes place every five years.

The principal objective of a SIAMS inspection is to evaluate the distinctiveness and effectiveness of a school as a Church school, and how well the distinctive Christian character and ethos of a school ensures the development and achievement of the whole child. Great Missenden was judged to be outstanding in all areas of the inspection. The Inspector was impressed with the children's behaviour, spirituality, attitude to work, growth mindsets and the depth of their thinking and responses. She also recognised the school's embedded Christian values, inclusivity and the contribution of parents and governors to the school community, as strengths of the school.

The effectiveness of Great Missenden as a Church of England school was judged outstanding because: 'Leaders have created an exceptionally strong and vibrant Christian ethos in which children grow joyfully as learners and as people. Collective worship successfully develops and celebrates the school's Christian values and is a cohesive force at the heart of the school community.' The report highlights, 'the excellent relationships with the local Church of St Peter and St Paul', the school's effective behaviour and anti-bullying policies, and the strong leadership and vision which is 'woven into the fabric of daily life' at the school.

Head Teacher, Mrs Taylor said, "I would like to thank all the staff for their hard work, dedication and willingness to always go the extra mile, which results in such a positive inspection". The full inspection report can be found on the school website www.greatmissendenschool.co.uk

CHILTERN
OPTICIANS

We now offer

OPTOMAP Retinal Scanning

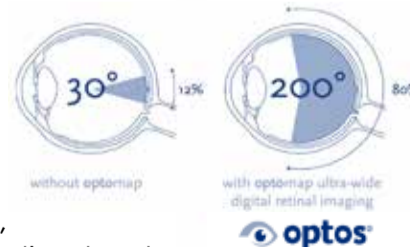
80% of world blindness is caused by:

- ◆ Glaucoma
- ◆ Age-related Macula Degeneration
- ◆ Diabetic Retinopathy

75% of blindness is preventable with:

- ◆ Early detection of these diseases

The Optomap Retinal Exam is used by your optometrist to get an ultra-widefield view of the retina:



for

- ◆ Early detection of eye diseases and pathologies,
- ◆ Baseline for periodic checkups

Call for an appointment:

75 High Street, Great Missenden HP16 0AL Tel:01494 868496 www.chilternopticians.com

NB. new email address for Chiltern Opticians: see-u-soon@chilternoptician.com



Gold for Isabelle Warren (14) for Fallow Deer portrait

Young photographers show their 'wild' side

Prestwood Nature Junior Wildlife Photo Competition

Stunning pictures of local wildlife by youngsters from local schools were displayed at the Prestwood Nature AGM in November following their first Junior Wildlife Photo Competition. The competition was open to all up to the age of 16 and awards were presented for the best pictures in the Animals & Birds and Plants & Fungi categories. The beautiful winning photographs are shown below:

Gold awards went to 14 year old Isabelle Warren (above) and 13 year old Annie Sutcliffe (below). Both were complimented on their technical ability by chief judge Keith Tyrrell who praised the overall high quality of the 79 entries, whether on mobile phone or digital camera.

Silver awards went to Heather Nixey (16) and again to Annie Sutcliffe on Cornflower'. Bronzes were awarded to Hannah Eades (13) and Hanna Lukasiewicz (12).

All Photo Competition entries can be seen in the Photo Archive on www.prestwoodnature.org along with pictures of other Prestwood Nature activities. If you are interested in entering the 2018 competition, details can also be found at www.prestwoodnature.org/photo-comp. You just have to be under 16. Prestwood Nature has a number of walks and other activities planned for 2018 where great pictures can be taken.



Gold for Annie Sutcliffe (13) for 'Aphids on Poppy'



Hannah Eades (13) 'Expressive Sheep'



Heather Nixey (16) 'Red Kite in mid-air'



Annie Sutcliffe 'Bumblebees on Cornflower'



Hanna Lukasiewicz (12) 'Scarlet Waxcap fungus'

HS2 Update:

Investigation of verges

These works relate to investigating the verges for the alterations around the two roundabouts on the A413 outside Great Missenden, Frith Hill and the Link Road. Many of you will have been delayed by the temporary traffic lights in the last week of January. a foretaste of what is to come!

In this instance the lights operated off-peak from 10am to 4pm and as work progressed the contractor was able to remove the lights early each day before the school pick-up time, for which we were grateful.

The aim is for the agreed roadworks to start this summer for completion by 1 March 2019.

Any concerns about these or future enabling works, please contact by email hs2enquiries@hs2.org.uk or telephone 08081 434 434

Cllr Mike Johnstone GMPC HS2 lead

Survey and Ground Investigation

These works have been on-going. The digging of trenches was due to start in the week beginning 19 February to establish the design of the temporary Haul Road from the Link Road roundabout on the A413 towards the north portal of the Chiltern Tunnel near South Heath.



The HS2 ground work investigations begin

HS2 HIGHWAY AND HAUL ROAD DESIGN DROP-IN EVENT



Great Missenden Memorial Centre, Link Road, Great Missenden, Bucks, HP16 9AE

Please join us on Wednesday 28 February 2018 From 2pm to 6pm

Presentation of plans Wednesday 28 February

Your Parish Council with District and County have been discussing with Fusion JV the designs for widening the Link Road, the traffic flow at the roundabouts, widening of Frith Hill and the screening of the Haul Road.

These plans, prior to planning submission, will be on display at a DROP-IN SESSION (see above) arranged by Fusion

JV and the local authorities in Great Missenden Memorial Centre from 2-6pm on Wednesday 28 February 2018

Local residents should also receive a separate notification.

Please pop in and look at the plans, copies of which will also be available in the library and the parish office.

The council will keep you informed.

GMG

GREAT MISSENDEN
GARAGE

Great Missenden Garage

a local independent garage that provides a friendly, personal service at affordable rates.....

- ✱ MOT'S
- ✱ SERVICING
- ✱ REPAIRS
- ✱ EXHAUSTS
- ✱ TYRES
- ✱ BATTERIES
- ✱ FAULT DIAGNOSTICS
- ✱ COURTESY CARS



**Rignall Road
Great Missenden
HP16 9AN
01494 866840/863479**

www.greatmissendengarage.co.uk

View from beyond the Hedgerow

The big news at the end of last year was a large immigration of Hawfinches from East Europe (pace Trump) because of a poor crop of autumn seed. Some reached our area and they were briefly seen in Prestwood, but the main flock settled for over a week in the area around Great Hampden church (including feeding in the yews). There was a large influx of birders as the news got round. As well as the 'twitchers', the local kestrel at Great Hampden had also spotted them. It probably profited from one or two! Hawfinches, which, apart from being large finches, have particularly stout beaks for cracking hard seeds, and enjoy those of Hornbeam trees, of which we have a good number round here.

You can spot these trees most easily by the grey streaks winding down the pale brown bark on their trunks. They were once planted in our hedgerows and wood-edges for their hard timber (as tough as their seeds), as well as being particularly suited for laying to create a good thick hedge. While they

are still plentiful and fruit abundantly you wonder why our native hawfinches have become so rare these days. It is probably because seeds and other foods have become so much less plentiful across our farmlands with intensive agriculture, chemical sprays and soil degradation. Farmers have to compete in a tough marketplace and they are forced to maximise crop yields, but some do it in a more environmentally friendly way than others. Farmers, though, are the ones who suffer most in the long term from the loss of pollinating insects and loss of soil fertility and integrity.

In several fields from Great Hampden to Hampden Bottom you may notice an unusual white-flowered clover growing amongst oil-seed rape crops at the moment. Some were in flower at the end of last year. This is Egyptian clover, sown under the crops by the Wallers of Hampden Bottom Farm. The clover is good at 'fixing' (concentrating) the nitrogen and mineral content of the soils; dug in after the crop is gathered it can keep the

soil in good condition. This new system has been in use a few years elsewhere, especially in France, and it is the first time I have seen it around here, although it is in fact a return to the system used locally over a hundred years ago, when crops like clover, lucerne and sainfoin were undersown or sown into fallow land for exactly the same purpose. Sometimes you still see the remnants of those old crops of lucerne and sainfoin around in the fields.

There is a good showing of sainfoin, with its thick spikes of shocking-pink flowers, every year on Stonygreen Bank just west of Prestwood. This is a steep chalk bank on the Wren Davis Farm, which, like Hampden Bottom, receives financial help from the government Environmental Stewardship scheme. One just hopes that this scheme, or something like it (or even better), survives Brexit, because it is part of the European Community programme. Under this scheme farmers are paid to keep some land out of production to return gradually to more natural vegetation, with plenty of flowers, seeds and fruits. Stonygreen Bank,

and an even larger field, Meadsgarden, on Wren Davis land, are under this scheme and are being returned to native chalk turf by not using fertiliser and not cutting too early in the year. You can see the progress at both sites from year to year, with new rare species arriving from time to time. In the middle of the summer they are good for butterflies. This year I found for the first time Large Wild Thyme growing at Stonygreen, amongst the already abundant Small Scabious, Bugle, and Clustered Bellflower. What I particularly like about wild thyme is the way, when you walk over a patch close to the ground, the herby scent rises into the air to add a new tang to the healthy country air. Both fields have some way to go to become the glorious habitats they were in the past, but they already have lots to show for themselves. There is a good path from Prestwood, through Stonygreen Wood and down the Bank to Nanfan Wood. There is even a seat at the top of the Bank for people to take it easy and absorb the peace, clean air and beauty of this place.



Purple hairstreak butterfly

As it happens, both these fields are on the route of Prestwood Nature's butterfly transect, which is walked every week for half the year. Its figures for numbers of butterflies at those two sites have shown a steady increase over the years, even though overall numbers show a slight decline. It shows the importance of appropriate maintenance, and it is sad that despite the gains made in a few protected spots our countryside is gradually getting more and more impoverished.

There are some causes for optimism. The Red Kite is well-established after being deliberately re-introduced just over 20 years ago. Even better news, however, is the return of the Buzzard after a century's absence, all of its own accord, hot on the heels of the kite. Ravens are now nesting after a long absence. Even Polecats have returned and

are breeding locally. These have all benefitted from the decrease in game-keeping, although that is still a threat - red kites were poisoned by baits set at West Wycombe not long ago. The next returnee may well be the Otter, of which we hear rumours of it moving up the Misbourne river. The main reason for its demise over most of England was not hunting, although that played a part, but the straightening of rivers and cleaning up their banks, removing otter habitat. Some advance has recently been made in rectifying



Buzzard (from Oosterhout)

these practices (which also resulted in more flooding), and it seems the otter is not slow to appreciate that. Before we see it in this area, though, we shall have to rectify the over-abstraction of water from the Misbourne and get its water-meadows back all the way from Little Missenden to the Mobwell.



Hornbeam tree



Hornbeam seeds



Sainfoin



Large Wild Thyme



Clustered Bellflower



Ewelme Cottages

Have your say about the AONB

Would you like to have a say on the Chilterns Area of Outstanding Natural Beauty (AONB) and how it is managed for future generations? The Chilterns Conservation Board is asking people to fill out a survey as they develop plans to protect this special landscape over the next five years and beyond.

The AONB, with its dramatic chalk ridge, beautiful valleys, meandering chalk streams and traditional brick and flint houses, spans the four counties of Buckinghamshire, Oxfordshire, Hertfordshire and Bedfordshire. Sitting on the doorstep of

London and with major towns and cities within easy reach it is arguably the most accessible protected landscape in the United Kingdom.

Share what you value about the area, what you are concerned about and what you think should be the priorities for the future at this link: www.surveymonkey.com/r/future-ofthechilterns.

All who complete the survey will have the chance to win £50 in vouchers from the Chiltern Brewery to spend on gifts and local produce.



P. KERNAN

TREE SURGERY

All aspects of tree work undertaken
Hedges maintained
Fully qualified—Fully insured

Local Authority Approved : Free Estimates
Firewood For Sale

Tel: 01296 330501 Direct: 07763 073663
94 Tring Road, Wendover, HP22 6NX

Two, zero, one, eight! Do you want to feel great?

Great Missenden Library kicked off the New Year with a series of Wellbeing events. Week 1 (16 January) was on Physical Health and Wellbeing. Visitors could have an NHS Health check, or their blood pressure and glucose checked by Kinton Pharmacy. There were also representatives from Age UK, Prevention Matters and many other free services available locally. Week 2 (24 January) was Mental Health Week with Dementia Awareness sessions and Tai Chi. Week 3 (2 February) was Community Safety Week with a scams workshop, legal advice, and representatives from the police, Fire & Rescue, Trading Standards and much more. All sessions were very well attended.



Wellbeing event at Great Missenden Library

For details of upcoming events, pop into the Library and see what's going on

Great Missenden Baptist Church groups

If you would like to know more about New Tricks lunch, New Tricks afternoon and games, Table Tennis or the Pop Up Kitchen and Garden contact Helen on 07795 404387

New Tricks lunch

On the first Friday of every month we hold a two course lunch at Great Missenden Baptist church. Everyone is welcome of course, but it tends to be retired people who attend. Meals are cooked on the premises and they vary from homemade soup to full Christmas dinner. The lunches are renowned for the delicious puddings. You are welcome to join in the cooking, and to bring with you a family member too. Go along at 11.30am on the first Friday of every month.

New Tricks afternoon tea and games

From 2-4pm on the third Friday of every month Great Missenden Baptist Church hold a high quality afternoon tea. There is always a fine array of home-made cakes to go with coffee and tea. There are a variety of board and card games, and a jigsaw is usually on the go too. Some people come to play a game, some just to chat and make new friends, and everyone goes for the cake! You are invited to this lovely afternoon of company, fun and food!

Table Tennis

A weekly table tennis group meets on Fridays at 2.30pm in the hall at Great Missenden Baptist Church. It is a very friendly group, open to all ages and abilities. There is no charge, although there is a donations jar for those who wish to use it. Two tables, and plenty of bats and balls ensure that everybody gets a chance to play. The aim is to make it fun and improve technically at the same time. They don't take part in any leagues or competitions, but play simply to keep fit and enjoy a game.

Pop Up Kitchen and Garden

For many people, it is harder to be part of a community these days than it was in the past. That is why GMBC started Pop-Up Kitchen. Each Monday afternoon, from 3.30pm onwards they open the church hall to everyone and anyone who cares to go. Everyone then cooks a meal together and sits to eat together. Young and old, single people and families find real benefit from the company, the meal and the friendship. Inevitably there are left overs, and

those who would like to can take food home with them when they leave. They also have a plot in which a variety of vegetables are being grown to eat during the year. At the moment most of the beds are empty, but soon this year's crops will be planted. Hopefully there will be enough to allow people to help themselves, and still leave plenty for cooking together on a Monday. Feel free to drop in and see what they get up to every Monday from 3.30-6.30pm.



Great Missenden Baptist Church

Finding the right dog trainer by Abigail Chung

With the inclusion of training and ensuring proper care, owning a dog is a huge responsibility. Finding the right trainer to help with this is very important. There are a variety of sources to help find a good trainer. Websites include the APDT (Association of Pet Dog Trainers), IMDT (Institute of Modern Dog Trainers), APBC (Association of Pet Behaviour Councillors), CAPBT (Coape Association of Pet Behaviourists and Trainers), PDTI (Pet Dog Training Instructors) and ABTC (Animal Behaviour Training Council) to name but a few. These main training associations promote a kind, fair and effective approach to dog training.

The thinking behind dog training has developed and expanded over the years. It was thought that dogs had a 'pack' mentality like

wolves, but the information came from observations of wolves in captivity. It is now recognised that wolves only resort to these behaviours when they are confined or when they have restricted access to resources. In addition, the many generations of domestication mean that dogs are only very distantly related to wolves. As a result, further scientific studies have shown that the formation of a trusting relationship between you

and your dog is the best way to make training effective.

There are no regulations in the dog training industry, making it difficult for you to be sure of the right thing to choose for your canine friend. The best advice is to check out any potential dog trainer through their website and social media links, contact them to ask to go along to a training class without your dog, watch how they teach and how their classes are set up, and then decide whether it would be suitable for you and your dog.



Effective training for dogs through trusting relationship



Gongs used for relaxation

Sound Journey Group

A new way to relax and unwind is coming to Great Missenden in March. The Sound Journey group is for anyone who would like to experience the transformative power of sound. All that is needed is to bring

something comfortable on which to sit or lie and allow the gentle tones of gongs, singing bowls, musical instruments and nature sounds to transport you to wherever you need to be.

Sound therapy is becoming

increasingly popular as more people discover its benefits. Qualified Gong Practitioner, Paula Tait, explains, "After a Sound Journey, people say they feel more relaxed, less stressed and full of energy. Why not come along and see what a Sound Journey can do for you?"

Anyone and everyone is welcome, and no previous experience necessary. The venue is the Great Missenden Memorial Centre, Link Road, Great Missenden HP16 9AE. Fri 2 Mar and 6 April 2018. 7.45pm. £14 per session. Booking is essential, and to do so please contact Paula Tait on 01494 440356 or visit www.paulatait.com



YOUR HANDYMAN
NO JOB TOO SMALL

BRYAN TOMES

25 CHURCH STREET
GREAT MISSENDEN
BUCKS HP16 0AZ

01494 864 322
07887 968 791



Building Renovations

**And
Extensions**

Kitchens & Bathrooms

Carpentry

01494 865906 or 07876 236535

References Available / Insured

www.elliottshomeimprovements.co.uk

E-Mail: info@elliottshomeimprovements.co.uk



Mayertorne Cottage
Bed & Breakfast
Wendover HP22 6QA
Tel: 44(0)1296 620830
www.mayertorne.co.uk
Email:
anthonykyes000@gmail.com

Community Counselling HP16
LOCAL AFFORDABLE COUNSELLING

Contact us
T : 07565 567439
W : www.cc-hp16.org.uk
E : info@cc-hp16.org.uk
Reg. Charity in England No. 1171823

Great Missenden & Prestwood Revitalisation Group

Incorporating Ballinger, South Heath and Heath End

Community Vision Update

Your community- Your future

It's time once again to give your views on what you consider to be the most important aspects that affect you living or working in this area.

Most of us would agree that this is a great area to live in - blessed with being surrounded by beautiful countryside, well located for accessing London and the rest of the country, good schools and medical facilities and a wide choice of shopping and other activities nearby - but what would make it an even better place to live, work in or visit?

An opportunity for you to air your views

The last time you were asked to contribute to the Community Vision, otherwise known as 'CV4HP16', was back in 2007. At that time a questionnaire was circulated to all local households as part of a Market Town Health Check, the results of which can be seen at www.gmprg.org.uk/cv4hp16.html.

Great Missenden & Prestwood Revitalisation Group (GMPRG), is a community group which includes local Councillors from Great Missenden Parish, Chiltern District and Bucks County Councils and local volunteers. It is now launching an update of the Communi-

ty Vision to see what still needs to be done from the last action plan, to discover new community ideas and promote them to local statutory bodies and to initiate projects that will stimulate a renewed sense of community.

GMPRG would like to know what you like and what you dislike, what your needs might be over the coming years and what your priorities would be for the future to help fulfil these needs. Also what environmental, community or social matters do you think are in need of improvement?

Whilst speeding, parking and potholes are important issues, the authorities responsible for these are the District and County Councils. However, the Community Vision update will address smaller scale projects that will also improve village life.

As you can see from the questionnaire below, all we are asking of you is to fill in as much as you wish and return it to one of the addresses listed. If you would prefer to reply online, you may do so via the GMPRG website at:

www.gmprg.org.uk

Photograph competition

Chiltern District Council Communities & Leisure Team have kindly donated a £50 Amazon token to be awarded for the best photograph demonstrating your likes, dislikes or ideas. So please hurry and let GMPRG know your thoughts.

Invitation open to all

There will also be two workshop days conducted to gain further insight into what local people of all ages and backgrounds think about where they live and work and what could help to improve life for them.

These will be held at-

2 to 8pm. Friday 23 March, Great Missenden Memorial Centre, Great Missenden, HP169AE

2 to 8pm. Friday 20 April, Prestwood Village Hall
Please do pop in for tea, cake and a chat.

Consultation closes Monday 15 May 2018

GMPRG- Great Missenden & Prestwood Revitalisation Group (incorporating Ballinger, South Heath & Heath End)
Community Vision Consultation Questionnaire 1 March to 15 May 2018

Please answer the questions below and if you run out of space continue on a separate sheet

1. Do you?-

- Live in the area
- Work in the area
- Go to school here
- Visit
- Shop

2. What do you like about the area?

3. What do you dislike about the area?

4. What aspects would you like to see improved?

- Appearance of the villages
- Improvements to public spaces
- Communications -wifi/mobile signal etc.
- Transport
- Sports activities
- Road safety
- Provision for cycling
- Community buildings
- Sports activities
- Play facilities
- Facilities for children and young people
- Facilities for the elderly
- Street lighting
- A business hub
- Other- Please give details

Please tell us more about your views in the box below-

Please cut out this form and deliver to JNP Estate Agents office in Prestwood or Great Missenden Library or scan and email to secretary@gmprg.org.uk

Great Missenden & Prestwood Revitalisation Group

Incorporating Ballinger, South Heath and Heath End



The GMPRG meeting to discuss the Community Vision consultation, with Carole Eaden in the chair.

Great Missenden & Prestwood Revitalisation Group (GMPRG) is a voluntary community group set up in 2003, one of 7 revitalisation groups in Chiltern District. The other groups are Amersham Action Group, Amersham Old Town Community Revitalisation Group, Chalfont St Giles & Jordans Revitalisation Committee, Chalfont St Peter Revitalisation Action Group, Chesham Connect, Little Chalfont Community Association.

These exist for each community to identify its own needs, values, challenges and priorities with the objective of conducting projects to:

- Improve vitality of town & village centres
- Environmental improvements for residents and visitors
- Demand effective statutory services
- Community led provision of services
- Health & wellbeing projects - younger & older people

All of these revitalisation groups are independent, not for profit organisations run 100% by volunteers, supported by the Communities Team at Chiltern District Council (CDC).

Since 2003, with CDC support, the revitalisation groups, have completed 70 projects, such as:

- Landscaping, planting, fencing, river bank clean ups
- High streets and village centres - events linked to shopping
- Small Business Saturday – partnership between retail and community
- Visitor information & shopping guides
- Community events fairs & fetes, St George’s Day, Chinese New Year
- Heritage & museum projects intergenerational, local history
- Community Libraries
- Youth provision, summer holiday diversionary activities & youth clubs
- Older persons action groups, service info, gentle exercise
- Environment community orchards; energy conservation;

- Communication –community newspapers & websites,
- Anti HS2

Recent and ongoing capital projects include-

- A youth club building extension** – at Chalfont St Giles
- Nature Park** in Little Chalfont
- High street market improvements, canopies, signage** in Chesham
- Play area and “Space for All”** in Amersham Old Town
- WW1 Memorial & Peace Garden** in Chalfont St Peter
- Miltons Cottage energy conservation** in Chalfont St Giles
- Misbourne pathway** at Chalfont St Giles
- Secure cycle parking** for Prestwood & Great Missenden.

Following the death of its Chairman, John Skrimshire, in 2016, GMPRG’s remaining members, wanting to continue the good work done by him and those before him, set up a new committee representing Great Missenden, Prestwood and neighbouring villages. The aims of this group are to (contd. on p11)

GMPRG- Great Missenden & Prestwood Revitalisation Group (incorporating Ballinger, South Heath & Heath End)
Community Vision Consultation Questionnaire 1 March to 15 May 2018

5. What would you like the area to look and feel like in 10 or 20 years time?

6. What additional services would you like?

7. What type of transport do you use most?

8. What type of projects would you like to see community funding associated with HS2 be spent on?

9. What do you think are the area’s best assets?

10. Do you think this is a good place to live/work/visit?

Thank you for completing this form, for your submission to count please provide:

Name :

Postcode:

Your age group-please circle-

Under 15	35 to 44	75 to 84
16 to 24	45 to 64	85+
25 to 34	65 to 74	

If you would like GMPRG to keep you updated on the consultation please provide email address or contact details

Would you be interested in joining a project team or attending a focus group?

(GMPRG & The Source will only use the information on this form for the purposes of this consultation and will not share it with a third party)

Great Missenden & Prestwood Revitalisation Group

Incorporating Ballinger, South Heath and Heath End

(contd. from p10) facilitate discussion and collaboration for the initiation, development and implementation of schemes for the social, economic and environmental benefit of Great Missenden Parish as a whole.

One of the benefits of the group is that it can apply for funding that is not available to statutory bodies such as local councils. This has led the group to change its name to Great Missenden & Prestwood Revitalisation Group, from Great Missenden Parish Revitalisation Group to avoid any confusion of association with the Parish Council, but still to be known as GMPRG.

The Prestwood Revitalisation subgroup has now joined the main GMPRG committee.

In addition, the website is currently being updated. From 1 March you can contact GMPRG and, if you wish, complete the Community Vision consultation form online at: www.gmprg.org.uk



The story so far, the previous consultation

Some local residents may recall the last time they were asked to contribute to the Community Vision, otherwise known as 'CV4HP16', back in 2007. At that time a questionnaire was circulated to all local households.

The 'Emerging Vision' identified these as the most important aspects of the area-

- Conservation of the natural environment
- High Street regeneration
- A sense of community
- The local economy
- Litter and recycling services

- Sympathetic and affordable development
- Traffic and parking
- A sense of community
- Enhancement of social services
- Community and recreational facilities
- The needs of young people
- Attracting visitors
- Availability of local information

Based on community responses, a set of strategies emerged to progress the ideas that were felt could make a real difference to our communities in the future. A list of projects was drawn up and a further consultation undertaken. These projects included-

1. An environment forum
2. Prepare a Parish Village Design Statement
3. Develop a traffic management plan
4. Create a community transport plan
5. Set up a youth forum
6. New Community facilities in Prestwood
7. Build a business network
8. Create information and visitor strategies

Numerous other project ideas came out of the consultations, many of which formed the basis of the Action Plan, which can be seen at www.gmprg.org.uk/

What was needed and what has been done?

Not too surprisingly there were a number of comments about high volumes and speed of traffic and rat runs. There were also concerns about bus services and transport in general for those in the parish without cars or unable to drive.

One of the outcomes was that, despite Prestwood being a significant centre of population and amongst the largest villages in the UK, it lacks a real centre for community focus.

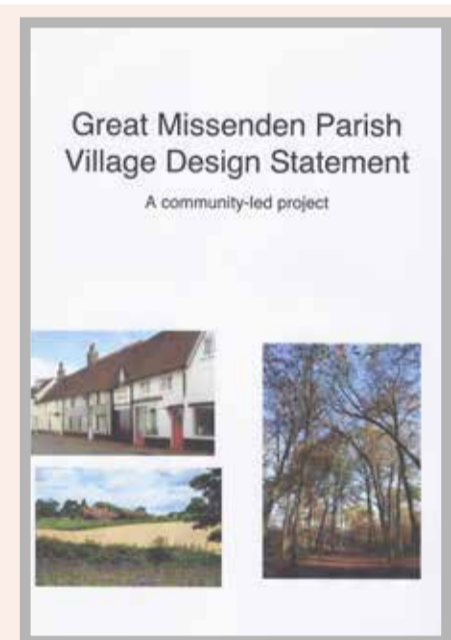
People also expressed concerns about retaining local shops, the environment, the community and communication.



As a result of the survey and Action Plan, HP16 The Source newspaper was launched to improve communication throughout the community.

A further project as a result of the Action Plan was the Parish Village Design Statement, the purpose of which was to provide guidance for residents, developers, architects and planners, by determining the type of new developments and buildings the local village communities consider would enhance their local environment. The draft report was consulted with the Parish in the Spring of 2012, supported by the Parish Council. The full statement can be seen on the Great Missenden Parish Council website (all one long website address):

www.greatmissendenpc.co.uk/wp-content/uploads/2012/10/Great-MissendenParishVillageDesignStatementFinal.pdf



The Parish Village Design Statement (VDS) is a report prepared by members of local communities, in partnership with the Local Planning Authority to:

- Describe the visual features and qualities of the villages within the parish that are valued by local people
- Identify any characteristics that could serve as inspiration for future development
- Identify the character of the villages in terms of landscape setting, the shape of the settlements and the nature of the buildings themselves
- Put forward guidance on how these local characteristics could be reflected in new development eg. make recommendations for open and connecting spaces, building form, materials and details, streets and street furniture.

Village Design Statements have now been superseded by Neighbourhood Plans, examples of which, done by other communities in Chiltern District, can be seen at: www.chiltern.gov.uk/planning/neighbourhood



Funding opportunities

You may be thinking that all these plans for new projects are all well and good, but where is the money coming from?

Good question. Clearly, unless we all want to pay higher Council Tax, local authorities with all the budget cuts have little money to spare for large capital projects, but there are other funding sources.

As well as the obvious ones such as the Big Lottery which distributes millions of pounds of the National Lottery's money to community groups and charitable projects around the UK, there are now a number of new potential funding sources for this area associated with HS2.

Amongst them are the £40 million HS2 Community and Environment Fund and the Business and Local Economy Fund. Further community funds will also be available from HS2 contractors Align and Fusion.

Locally we are also very lucky to have Community Impact Bucks who help local community groups identify and apply for the plethora of smaller funds available for such projects.



New secure bike parking

As a result of a local resident pointing out the lack of secure bike parking in Prestwood, GMPRG has sourced funding for bike stands in the High Street Car Park and has sufficient funding for further sites in the parish.

Following agreement from Chiltern District Council, which owns the car park, the first 'Sheffield' type stands will be installed this Spring.

Further sites for new bike parking currently under discussion are at Great Missenden Library and the shopping area of Prestwood.

It is hoped that this provision will encourage locals to get on their bikes when popping to the shops, instead of going by car.



Secure bicycle parking



Current look of the corner of Prestwood High Street and Wycombe Road



Proposed look of the corner of Prestwood High Street and Wycombe Road

Revitalising Prestwood village

In March 2016, GMPRG subgroup Prestwood Revitalisation Group held a community meeting at Prestwood Village Hall where Ben Hamilton-Baillie presented his proposals for a 'place making' scheme at the corner of the A4128 at the junction of Wycombe Road, Honor End Lane, Chequers Lane and the High Street. The project report can be seen at:

www.prestwoodva.org.uk/prg/BH-B-PRG-02b-2016.pdf

The need for this project came out of the previous Community Vision where local people had responded – "Prestwood is a significant centre of population- amongst the largest villages in the UK- but lacks a real centre for community focus".

The purpose of the exercise is to revitalise the shopping area of the village to create a focal point and help bring cohesion to the community."

Following the presentation, the proposals were the subject of a consultation, which resulted in 177 responses from local people, of these 143 were positive, 12 undecided and 22 against the scheme.

There were many encouraging comments including: "a real need for some TLC to improve the village centre – in particular, the area between the Chequers Tree and Village Hall which is crying out for an up-to-date quality image to give definition to what is the heart of the village".

"Would make a huge difference to the economic prosperity of the businesses in the village and the enjoyment of the village for its residents going forward."

The project has gained support of local Councillors, the BCC Councillor Mark Shaw, Portfolio Holder for Transportation and the GMPRG project team for this project are in discussions with Bucks County Council about the next stages.

The benefits of public realm improvements such as this are outlined in the DCLG document 'Re-imagining urban spaces to help revitalise our high streets' which can be viewed at:

www.gov.uk/government/uploads/system/uploads/attachment_data/file/5987/2185491.pdf



Proposed overview of the corner of Prestwood High Street and Wycombe Road



Proposed look of the corner of Prestwood High Street and Green Lane

Volunteering

With so many people leading busy lives, it can be hard to find time to volunteer. However, volunteering can deliver benefits for both volunteer and the community. Contributing to something worthwhile, connecting to your community, improving the environment and increasing its value. Even a small contribution of time can make a significant difference.

GMPRG's structure of having a management committee and as many 'project teams' as required, allows new

people to join in. More volunteers will be of great help, especially once the results of the Community Vision have been analysed and a new Action Plan drawn up. If you think you would like to find out more about getting involved, please let GMPRG know on the consultation form or via the website: www.gmprg.org.uk



50 years of the Colts



Prestwood Colts & Girls Football Club will be holding their annual presentation weekend on Prestwood Common from Friday 18 through to Sunday 20 May.

This popular community event is even more special this year as the club is celebrating its 50th Anniversary.

In honour of the club's history, any past managers, coaches, reps, officers or players are invited to the Band night and disco on Saturday 19 May (tickets available) and on Sunday 20 May at 1pm to reminisce and remember their past glories on the football field. With that in mind, maybe a group of ex-players would like to enter the Dad's mini tournament.

Over 200 boys and girls are registered and play regularly every week and as well as celebrating current and past players we are always looking to welcome



new young players.

For any information please contact secretary@prestwoodcolts.org

An U6 Taster Session will be held on Prestwood Common HP16 0QF (outside the pavilion on the centre of the common) 10.30-11.30am on Saturday 12 May. Players who attend will then be invited to join in the Presentation celebrations the following weekend (Sun 20 May) to play in a mini tournament and receive a medal.

Highlights of the weekend are mini tournaments, raffle draw 3pm Sunday 20 May, fully stocked bar, BBQ and sweet shop all weekend. So please do come along and join in.



Aerobics class at Sprinters

Age no barrier to exercise at Better Sprinters Leisure Centre

Maintaining muscle and bone health, preventing high blood pressure, high cholesterol and heart disease, plus reducing the risk of diabetes are just a few of the reasons why age should be no barrier to exercise for the people of HP16.

Members at the Sprinters Leisure Centre range between 11 and 96 years old and benefit from a wide variety of activities to individually suit them, including walking football, flexibility and aerobics classes. Each member of the friendly fitness team is trained to design fitness programmes suitable for all different age groups, fitness goals, abili-

ties and health.

The customers of Better will also have the opportunity to take part in the company's annual Club Games in May 2018, showing it's never too late to compete. Teams across the country take part in nine sporting events ranging from badminton, short tennis, table tennis, swimming, timed cycle, dominoes, darts, short mat bowls and walking football.

To get involved or for further information, contact the team on:

01494 866688 or
sprinters@gll.org.

You can add us on Facebook or follow us on Twitter: @Better_Chiltern

Calling all runners!

Prestwood 10K, 5K and Children's Ultimate Warrior Challenge Sunday 13 May.

The Ultimate Warrior Challenge is new for 2018 replacing the fun runs and it will take place alongside the current Prestwood 10K which has been a success for the past 14 years. 2018 will be the year of the Viking and the unique 'Ultm8' Warrior Obstacle Course has hurdles, net crawls, walls, spiders webs and more. There will also be warrior themed obstacles such as taking on Thor, and the Roman shield carry with sponge throwing for parents!

All children will receive a quality Ultm8 Warrior 'Year of the Viking' medal for taking part. Children will take part in their age appropriate race starting at 12.30pm.

All children who take part will receive a special medal on the day and will

Registration is online at:
www.riderhq.com/events/77169/prestwood10k
To set up your fundraising page, please go to:
www.everydayhero.co.uk/event/prestwood18



be awarded a personalised certificate for their fundraising efforts if they raise £10 or more. There will be an interschool Trophy for the school that has the most entrants.

All proceeds from the event go to the Chilterns MS Centre which welcomes 370 people with multiple sclerosis (MS) every week. No charge is made for their treatments, therapies and services although people are asked to make a donation when they can. Because the NHS provides no long-term treatment for people with MS, the Chilterns MS Centre provides a lifeline. If you would like more details of how to enter and for sponsorship details please go to:

www.chilternsmcentre.org



Mother's Day

Sunday 11th March 2018

Vintage Tea

Treat mum to an especially indulgent afternoon at Missenden Abbey. Enjoy a quintessentially English, vintage style, Afternoon Tea accompanied by the soft sounds of a live harpist.

£25 per person. Reserve your place for between 12:30pm and 4pm, by calling us on 01494 866811 or email events@missendenabbey.ltd.uk.

What's included?

- Selection of herb infused tea
- Tea blends and variety of coffee
- Amuse-bouche of macarons
- Freshly made tea sandwiches
- Homemade petit-fours
- Freshly baked scones
- Fruit conserve and clotted cream
- 200ml bottle of Bottega Prosecco

Great Missenden Christmas Festival donation to Walled Garden



The Great Missenden Traders Group present cheque to Missenden Walled Garden

The Christmas Festival organised by the Great Missenden Traders Group on 25 November 2017 raised £2,000 and on Wednesday 24 January they presented a cheque to their nominated charity, the Missenden Walled Garden. The money will go towards the £20,000 needed to build and equip a new chalet for the gardeners to use, not just as a welfare facility but also as a learning, craft and recreation centre. Chareline Gibbs said, "It is so important that they have somewhere to gather together to work and socialise and not feel isolated, as unfortunately is often the case. The donation represents a significant portion of the cost and we would like to say thank you to the village and all who supported the Festival".

Since the charity was taken over on 1 June 2017, the number of adults with disabilities benefitting from the safe and supported horticultural based working environment has grown from 17 to 31, a huge increase in only eight months. The number of volunteers has also risen from zero to 15 in that time too.

Gardeners gain new skills

Missenden Walled Garden has received a training grant from the Local Area Forum (LAF), and has wasted no time in putting it to good use. Councillor Peter Martin, chair of the LAF, presented certificates to a group of gardeners who have achieved passes in Health & Safety Level 1. He also handed certificates to 4 gardeners who have trained and achieved passes in Mower Operation to LANTRA national standard. Chareline Gibbs, one of the trustees of the Missenden Walled Garden Charity said, "We are so very proud of our gardeners - not just today but every day. With the help and support of our wonderful staff here, led by our garden manager Rob Thomas, and a growing team of enthusiastic and skilled volunteers, it just goes to show what can be achieved by our gardeners. With the help of this grant from the LAF we have been able to train 16 gardeners plus 6 volunteers - we believe that it is essential to invest in all of our people and in their futures". If you are interested in finding out more about our wonderful work with adults with disabilities



Cllr. Peter Martin presenting certificates to successful gardeners



Holy Trinity Prestwood stations restored ready for Easter

Stations of the cross restored

Two years after the major restoration of Holy Trinity, Prestwood was completed, the final part of the work has been done: the restoration of the Reredos and the fourteen Stations of The Cross by Cliveden Conservation. This was a significant piece of work that took about two weeks. Project Manager David Wickham said, "We had two specialist conservators working on the project. The care they took and the skills they demonstrated were extraordinary. It was wonderful to see the beautiful glass mosaic at the East end -- the reredos -- being cleaned and restored, and all the damaged tesserae being replaced." Now the mosaic, made of Venetian glass around 1899-1900, has

been restored to its former glory. The Rector, Deiniol Heywood, commented, "The Stations of the Cross and the Reredos are the two chief decorative elements of the church. The Stations tell the story of Jesus' trial and crucifixion. To see them now, restored and returned to something like their original state is very moving." There will be a special service of the Stations of the Cross on Tuesday March 27th at 7.30pm to which all are invited. The Rector continued, "Holy Trinity is open every day in daylight hours. Everyone is welcome to come in and spend some time in quiet and reflection. We hope both these beautifully restored features will help people as they take that time to be with God."

Great Missenden Coop Charities

The three Local Community Fund causes at Great Missenden Coop this year are The Walled Garden, The Friends of Great Missenden Parish Church, and a Holmer Green Church. Coop members can choose which charity to support and 1% of sales on Coop products go to worthy causes. Last November Prestwood Nature were presented with a cheque for £2,600 and Thomas Ball Children's Cancer Fund was given £2,500.

Local Contact the Elderly group seeking volunteers

The Contact the Elderly group in our area organises a monthly Sunday afternoon tea party for a small group of people, aged 75 and over, who live alone. The aim is to offer a regular friendship link for people who might be isolated from family and friends.

Could you help?

There are two volunteering opportunities available: becoming a host, or becoming a driver.

A host opens their home and provides the food for a Sunday afternoon tea party once a year. A driver picks up two or three of the tea party guests from their homes, drives them to the tea party, socialises with everyone over tea, and drives the

guests back home.

We usually entertain 8-10 guests plus 3-4 drivers. Drivers are contacted every month and asked whether or not they are available to drive. Drivers who can commit to driving regularly, just occasionally, or even just once or twice a year are welcome.

There is already a wonderful group of volunteers who have been providing tea parties through Contact the Elderly for the last 10 years and it is hoped that some more can soon be added.

To offer help or find out more information, please contact Sue Kwan on suekwanct@gmail.com 01494 864423 or 07741 480012.

King's Church
Prestwood

**WE NOW MEET AT
PRESTWOOD VILLAGE HALL
ON SUNDAYS AT 10.30AM**

WE WOULD LOVE TO WELCOME YOU
PLEASE VISIT OUR WEBSITE
WWW.KINGSCHURCHPRESTWOOD.ORG

Minister: Colin Veysey—01494 862257
Or email: cvkingsp@aol.com



Great Missenden

A warm, friendly sheltered house for the elderly in the picturesque centre of the village.
Come and take a look to see for yourself and have a chat with
Carol Lauder-Ross
Tel: 01494 865026
or email for a brochure
info@abbeyfieldgreatmissenden.co.uk
Find out more on our website
www.abbeyfield.com



FINE BESPOKE FURNITURE
from Catherine Stevens

Built-in and freestanding cabinets, shelving and media units, studies, tables, kitchen and bedroom furniture and fittings.

Telephone: 01494 866932 Mobile: 07840 757 336
Website: www.catherinestevensfurniture.co.uk

 **Simply the Best**
The Professional Dry Cleaners & Launderers of Distinction
DRY CLEANERS
&
SHOE REPAIRS
Drop off and Collection for just £1

 **UPS Access Point**
Drop off and collect anytime

 **Salt for Water Softeners**
Block Salt 11 for the price of 10
Delivery within 3 miles available

 **Godden Butchers**
Fresh food available
at The Pantry on Platform 1

 **The Pantry**
Open 5.15 AM
Ready for the first train

New 'Wet Clean' process available in HP16

Wet Clean your clothes

One of the advantages of having an excellent local microbrewery is the innovative opportunities that regular customers bring to the area. One opportunity is a 'Wet Cleaning' service as two local businesses, SPEEDY Iron and Malt The Brewery team up to make this revolutionary, eco friendly cleaning process available to HP16. So next time you drop into the brewery for your real ale, don't forget to take your cleaning with you!

What is 'Wet Cleaning'?

According to the Environmental Protection Agency (EPA), wet cleaning is the safest professional method of garment cleaning. It is an innovative, modern

alternative to dry cleaning which does not use harsh chemicals - good news for both workers and customers. It offers a gentle environmentally friendly cleaning of almost all 'dry clean only' items.

The eco friendly difference

Surprisingly the traditional Dry Cleaning process isn't dry, but uses solvents to remove dirt from the surface of fabrics that could otherwise degrade in water or the rough and tumble of a washing machine. The most widely used solvent is Tetrachloroethylene (perchloroethylene) which, in the 1980s, was found to be both neurotoxic and carcinogenic. It can now only be used under license.

The wet cleaning method, however, uses water with a special biodegradable detergent. Items cleaned by this process stay softer, last longer, are better for the skin and without chemical smells. Clothes are also protected from over-drying and colour fading. The process uses 30% less water than a traditional wash cycle and because it can still provide excellent results at as little as 20C (degrees) the energy footprint is reduced by up to 50%.

Big brands such as Hugo Boss are supporting the revolutionary move from dry to wet cleaning by replacing the 'P' (dry clean) with a 'W' (wet clean) on their care labels.



Laura Anderson in her new shop

From US to us - The Wool Nook

The Wool Nook is a tiny new wool shop at the side of Cross Roads Garage run by Laura Anderson. The shop stocks knitting wools and some haberdashery, offers complimentary tea and coffee, and runs knitting and crochet workshops. Laura says it's a place where "anyone can feel welcome, have a chat, and be surrounded by lovely colours".

Laura came to Prestwood from America three years ago and continues to work remotely for a US

corporation. However, she found she was feeling increasingly isolated and wanted to find a way of connecting with the community through her 40 years of experience in crocheting. The shop was her way of achieving this.

She is keen that the shop is affordable so that anyone who wants to knit or crochet can do so without breaking the bank. The brands of wool currently on sale are the result of customer feedback and customers are welcome to

place special orders.

Laura holds regular workshops, mainly one-off workshops, on topics such as Beginning Crochet, Crochet for Left Handers, Reading a pattern and new stitches. Please see the website or Facebook for details. She is also looking for knitting workshop leaders.

Laura has also set up a group, The Wool Nook Friends, which can be reached via the shop's Facebook page, for people to share their latest projects, ask questions etc. The group is separate from the commercial arm of the shop.

The Wool Nook is open Tues-Fri 9.30am-2.30pm, Sat 10.00am-3.00pm.

Closed Sun & Mon.
www.thewoolnook.com
Facebook:
@TheWoolNook



The Wool Nook, Nairdwood Lane

Malt The Brewery shop and tasting bar

If you haven't visited the brewery recently, it's well worth a trip. The Micro-Brewery is set right at the heart of the Chilterns in Prestwood, Great Missenden.

Malt The Brewery launched their 'SHOP, TASTE and TOUR' offer in January last year and this year has seen more changes and visitors will now find a comfortable tasting room and bar from which to enjoy a Malt Ale, local artisan spirits and English wines.

Uniquely situated over looking the brewing hall, visitors can see the brewing operations from the large gallery window whilst enjoying the taste of the ale they can see being made.

The shop promotes local produce from within the Chilterns. In addition to their ales, they now feature local vodka and gins made from grains grown on their farm, and snacks from less than 10 miles away. In December a new range of chutneys made with Malt



Ales was launched. Beer and chutney seem the perfect match as they quickly sold out, Malt The Hot One being particularly popular! Now back in stock it's worth a visit just to grab one of these!



The new look Tasting Bar at Malt the Brewery

Blue Dragon Drycleaners Close

The Great Missenden branch of Blue Dragon Drycleaners closed its doors at the end of last year. Managing Director Colin Hill, in a letter to customers, said, "Over quite a number of years business in Great Missenden has become more and more difficult, with the banks and other shops closing in the village, and combined with the uncertainty of HS2, the customer footfall into the shop has decreased steadily, putting it into a loss making posi-

tion. Combined with our lease coming to an end and requiring renewal, the Board of Directors decided to cease trading in Great Missenden...".

The loss of another useful shop is a blow to local residents and highlights the precarious nature of shops and businesses in Great Missenden. 'Use it, or lose it' is the harsh reality. Parking is almost certainly one of the key issues, so please support our Councillors and other organisations as they try to find ways to improve parking in Great Missenden.

Accountants, just a little different . . .



Cannon Moorcroft



Call us today on 01494 450123 to discuss your taxation and accounting needs.

www.cannonmoorcroft.co.uk

Festival of Sciences at St Peter & St Paul



2017 Science Festival at St Peter and St Paul Church

Following the success of the event last year, St Peter and St Paul in Great Missenden is planning another festival during British Science Week this March. The aims of the festival are to celebrate the joy and beauty of the sciences, and to give thanks for and celebrate the lives and contributions of scientists and engineers. Science and faith are often seen as being in conflict. The festival hopes to answer some of the questions relating faith to the sciences - or at least

raise them. It also hopes to address the view held by many that the sciences are not for them by showing the beauty and wonder of things scientific.

Last year's festival was actively supported by The Misbourne School - the picture shows one of the students showing the Global Warming display to Alan, Bishop of Buckingham. It is hoped that school participation will be greater this year with other local schools involved or visiting. Displays will range widely from showing the church bells to statistical paradoxes, from solar energy to bee handling and the impact of bees on crops worldwide.

The festival runs from Friday 16, to Sunday 18 March at St Peter & St Paul, Great Missenden. More information at:

www.missendenchurch.org.uk

Prestwood Forget-Me-Not Club

The hand of friendship welcomes you

This is the motto of the Prestwood Forget-Me-Not Club who endeavour to remain faithful to it by offering a very warm welcome to everyone, and in particular to any newcomers. Their afternoon meeting includes tea and homemade cakes along with entertainment at Prestwood Village Hall from 2.15pm on the first Tuesday of the month (except June and August). Their call is to daughters/sons, granddaughters/grandsons, nieces/nephews, great nieces/nephews to encourage their

mothers/fathers, grandmothers/grandfathers, aunties/uncles, and great aunties/uncles to get along to the club, where they will meet a lovely group of people and enjoy a very sociable afternoon.

Transport is available for those who are unable to walk or do not drive. If you would like more information about The Forget-Me-Not Club, please contact them on 01494 865682.

It's a real opportunity for some great company where 'The hand of friendship welcomes you.'

Free bus to Tesco Amersham

Did you know there is a free bus to Amersham Tesco every Tuesday? It's run by Harlequin Travel and goes round Little Kingshill, Prestwood and Great Missenden. The driver helps you on and off with your shopping.

T2 Little Kingshill, Prestwood & Gt. Missenden			
Tuesdays			
TESCO Amersham dep	-	1130	1345
Winchmore Hill	0910	1140	1355
Penn Street	0914	1144	1359
Holmer Green, The Bat & Ball	0920	1150	1405
Holmer Green, Pond	0922	1152	1407
Watchet Lane, Harries Way	0924	1154	1409
Little Kingshill School	0930	1200	1415
Great Kingshill Common	0934	1204	1419
Wren Davis	0938	1208	1423
Giles Gate	0941	1211	1426
Prestwood Main Road	0944	1214	1429
Tanton House	-	1220	1434
Great Missenden High Street, Library	0947	1225	1440
Fire Station	0949	1226	1442

The bus then goes straight to Tesco from the Great Missenden Fire Station

Church events for Easter Lent courses

Faith and the Law Lent Series.

Sundays through Lent

Great Missenden Parish Church. 4pm.
25 Feb. Judge Christopher Tyer.
4 Mar, Vicky Preece.
11 Mar, Philippa Hopkin QC.
18 Mar Barrister Caroline Allen.

Finding a Voice Lent Course,

based on the film The Kings Speech.
Wednesdays through Lent
at Holy Trinity Church, Prestwood.
11am-12.30pm. followed by soup & roll or
7.30-9pm starting with coffee/tea & biscuits
28 Feb, 7 March, 14 March, 21 March.

Sunday 25 March

Palm Sunday Eucharist 9.25am.
Holy Trinity Church Prestwood.

Palm Sunday Service. Great Missenden Parish Church. 10am

Palm Sunday at Prestwood Village Hall: 10.30am. The King's Church Prestwood with Richard Wightman of New Life Church, Milton Keynes.

Passiontide Service. Great Missenden Parish Church. 6pm

Holy Week:

Monday 26 March

Living Waters. An evening of mindful reflection to begin Holy Week. Holy Trinity Church Prestwood. 7.30pm

Tuesday 27 March

Stations of the Cross. An ecumenical service. Holy Trinity Church Prestwood. 7.30pm

Holy Week Communion Service on at Lee Common Methodist Church. 8 pm.

Holy Week: Words and Reflections. Great Missenden Parish Church. 8pm.

Wednesday 28 March

Tenebrae service. Holy Trinity Church Prestwood. 7.30pm.

Holy Week Evening Prayer. St Mary's Ballinger. 8pm.

Thursday 29 March

Maundy Thursday Service. Prestwood Methodist Church. 7pm.

Sung Eucharist and Stripping of the Altars. Holy Trinity Church Prestwood. 8pm. The Vigil ends with Compline at Midnight.

Holy Communion with Washing of Feet. Great Missenden Parish Church. 8pm.

Good Friday 30 March

Walk of Witness from Holy Trinity at 9am, meeting at Prestwood Village Hall at 9.30am to The Green Man at 9.45am to join the Catholic Church and Baptist Church groups at 10.15am. Walk to the Oldham Hall, for 10.30am Churches Together Service.

A Meditation for Holy Week. The Seven Last Words of our Saviour on the Cross, Joseph Haydn. The Hampden String Quartet. St. Mary Magdalene's, Great Hampden. 12 noon.

The Good Friday Liturgy. Holy Trinity Church Prestwood. 2pm.

Alan Bullard Wondrous Cross - Music and Readings for the Passion. Great Missenden Parish Church. 2pm.

Saturday 31 March

Easter Craft, Music and Fun! Activities for children aged 0 to 11years. Holy Trinity Church Prestwood. 10am to 12 noon.

First Mass of Easter, followed by a Champagne Reception to celebrate Easter. Holy Trinity Church Prestwood. 7.30pm

Easter Sunday 1 April

Dawn Service on the Buryfield. 6am, finishing at Great Missenden Parish Church for coffee and croissants.

Easter Communion. Great Missenden Parish Church. 8am.

Family Festival Eucharist. Holy Trinity Church Prestwood. 9.30am. Celebration for all the Family, inc. the Blessing of the Easter Garden and Easter egg hunt!

Easter Sung Communion with Easter Egg Hunt. Great Missenden Parish Church. 10am.

Easter Day Service for all the family. Kings Church at Prestwood Village Hall. 10.30am. All welcome.

Easter Day service. Prestwood Methodist Church. 11am.

JOIN GREAT MISSENDEN LAWN TENNIS CLUB AND GET MARCH FREE!

NEW MEMBERS OF ANY ABILITY WELCOME!

JUNIOR MEMBERSHIP FROM £30, ADULTS £275

GREAT BEGINNER PROGRAMME!

U30, STUDENTS, COUPLES & FAMILY RATES AVAILABLE

WIDE RANGE OF JUNIOR & ADULT CLASSES

CLUB NIGHTS, TEAM & CARDIO TENNIS

Contact us at membership@gmltc.com

NEXT TO THE NAGS HEAD INN
LONDON ROAD, GREAT MISSENDEN



The Source

HP16 events



Saturday 24 February

Barn Dance with The Wick-trimmers. £10 with Dinner and Dessert. Auction (Refugees in Calais Project). Oldham Hall, Great Missenden. 7pm.

Wednesday 28 February

Prestwood Friendship Club. Musical afternoon with Rev Ruth Boughton. Prestwood Methodist church. 2.15-3.15 pm. Cup of tea beforehand. No charge, donations welcome. Enquiries to Mary 01494 862431

Friday 2 March

Womens' World Day of Prayer, produced this year by the Women of Suriname. Holy Trinity, Prestwood 10.30am. Followed by a soup lunch and refreshments. All are welcome

Pot Luck Lunch in Holy Trinity Church Hall. 1.15pm. Please bring a dish of food to share and £2 for church funds. Enjoy a three course meal in good company.

Saturday 3 March

Great Missenden Village Association village litter pick. 10.30am - 12.30pm. Convene on the Library forecourt at 10.30am (See page 3).

Friends of Great Missenden Parish Church Tony Marshall, Bugs, Bluebells & Badgers. Oldham Hall. 2.30pm, with Afternoon Tea. www.missendenchurch.org.uk Tickets £10 from Samways the Newsagents.

Quiz Night with fish & chip supper in aid of The Thomas Ball Children's Cancer Fund Prestwood Village Hall. 7.30pm. Tickets £12 each. Please bring your own drinks.

Teams up to 8 persons. Tickets available from the JNP Partnership or contact the charity 01494 890157 Email: tombballcharity@aol.com www.thomasball.org.uk

Sunday 4 March

Cafe Service 10.30 - 11.45am Informal gathering - multi-media presentation with brunch. King's Church Prestwood at Prestwood Village Hall. All welcome. Contact Colin Veysey 0788 4176201

Tuesday 6 March

Prestwood Forget-Me-Not Club for over the 60s. Prestwood Village Hall 2.15pm For more details contact Chris Davy 01494 865682

Prestwood Afternoon WI. Anne Holmes, Discovering Prestwood in the 16 and 17 th centuries. Prestwood Village Hall 2.15pm. Details 01494 862156

Thursday 8 March

Little Kingshill WI. Berni Knill, Hughenden at war. Little Kingshill Village Hall. 2pm. Visitors and New members are most welcome. Details. Christine Taylor 01494 868552

Prestwood Gardening Society. National Garden Scheme, Janice Cross. Prestwood Village Hall. 8pm. Contact Edna Little 01494 863454

Saturday 10 March

County and District Councilor Surgeries. Great Missenden Library. 11am-12 noon.

Sunday 11 March

Mother's Day Service. Great Missenden Parish Church. 10am.

Tuesday 13 March

Prestwood Evening WI. Art behind the Wall and The Wire, Denise Beddows. Prestwood Village Hall. 7.45pm. New members and guests welcome. Contact Chris Plested 01494 890202

Wednesday 14 March

Paws for Coffee morning in aid of Hearing Dogs for the Deaf. Little Kingshill Baptist Church Hall. 9am - 12noon. All are very welcome including dogs.

Prestwood Friendship Club. Trip to the Gambia, Tony and Elaine Ring. Prestwood Methodist church. 2.15 - 3.15pm. Cup of tea beforehand. No charge, donations welcome. Enquiries to Mary 01494 862431

Fri 16 - Sun 18 March

Science Festival. Great Missenden Parish Church 10am-4pm (11.30am-4pm Sunday) (See article on page 16)

Monday 19 March

Film Showing in aid of Christian Aid - The Shack. Great Missenden Baptist Church. 7.30pm - Soft drinks, popcorn, sweets available.

Tuesday 20 March

Great Missenden Evening WI. Anniversaries of 2018, Graham Horn. Oldham Hall Church Street Great Missenden. 7.45pm. New members always welcome. Details 01494 862000

Wednesday 21 March

Little Kingshill Village Society. AGM, Presentation, drinks and nibbles. Little Kingshill Village Hall. 8pm. (See article on page 3)

Chequers Folk @ The Chequers Tree. 8pm. Folk music with The Wick Trimmers & guest musicians. Free entry. Details Philippa Wallin 01494 866439

Wed 21 March (contd)

Prestwood Nature. Bird Walk to Shardeloes Lake Meet at The Crown Inn, Little Missenden, HP17 0RD. 9.30 to 11.30am Information John Obee 01494 865 564

Tuesday 27 March

Prestwood Nature. How to Help Hedgehogs, Philip Horwood Great Missenden Memorial Hall. 7.30pm to 9.30pm. Information: Vanessa Rickett 01494 866 516

Wednesday 28 March

Prestwood Friendship Club. Visit to Israel, Rev. Anthony Smith. (See Wednesday 14 March)

Tuesday 3 April

Prestwood Forget-Me-Not Club for over the 60s. (See Tuesday 6 March)

Wednesday 4 April

Prestwood Afternoon WI. Shoes for Cancer, Ann Bauling. (See Wednesday 7 March)

Friday 6 April

Pot Luck Lunch in Holy Trinity Church Hall. (See Friday 2 March)

Saturday 7 April

Prestwood Nature. Pollinator-Friendly Garden work party: light gardening and general tidying. Greenlands Lane Allotments, Greenlands Lane, Prestwood. 10am to 12 noon Information: admin@prestwoodnature.org

Tuesday 10 April

Prestwood Evening WI. History of British Parks, Paul Rabbits. (See Tuesday 13 March)

Wednesday 11 April

Prestwood Friendship Club. Ricky Ringers' - Handbell Ringers from Rickmansworth. (See Wednesday 14 March)

Thursday 12 April

Little Kingshill WI. Eliza McClelland, to bead or not to bead. (See Thursday 8 March)

Prestwood Gardening Society. The Genetics of Cultivated Plants, Dr Brenda Harold. (See Thursday 8 March)

Saturday 14 April

Prestwood Forget Me Not Club Annual Cream Tea and Spring Sale. Prestwood Village Hall from 2pm - 4pm.

Tuesday 17 April

Great Missenden Evening WI. Colin Oakes, Daniel Defoe: Socks to Crusoe. (See Tuesday 20 March)

Wednesday 18 April

Neighbourhood Police - Have Your Say Meeting. Great Missenden Library. 2-3pm Come and discuss any issues or concerns you may have with your local neighbourhood policing team.

Chequers Folk (See Wednesday 21 March)

Thursday 19 April

Comedy at the Brewery, doors open at 7pm, First act on at 8pm Tickets £10 from Malt the Brewery

Saturday 21 April

Prestwood Nature. Spring Flowers in the Hedgerows. Family friendly walk around local hedgerows. Meet outside Prestwood Village Hall. 2pm to 4pm. Information Karen van Oostrum 014494 256 508

Wednesday 25 April

Prestwood Friendship Club. Animal wildlife in a Game Reserve. (See Wednesday 14 March)

Saturday 28 April

Great Missenden Choral Society perform works by Purcell, Hewitt-Jones, Moeran, Finzi and Vaughan-Williams. Baritone, Nicholas Martin, and orchestra. 7.30pm. Great Missenden Parish Church. £15. gmcsonline.co.uk

The Damon Singers concert, 7.30pm at Holy Trinity Church, Prestwood. Tickets £12 on the door or £10 in advance from Samways or the Prestwood Post office or tel. 01494 712 583 / 07768 566 588 www.damonsingers.co.uk (see page 4)

Sunday 29 April

Afternoon Tea at the Abbey. Missenden Abbey. 3-5pm. Tickets £20. 01296 823040 Email: fundraising@chilternsm-centre.org All proceeds to Chilterns MS Centre.

Tuesday 1 May

Prestwood Forget-Me-Not Club for over the 60s. (See Tuesday 6 March)

Wednesday 2 May

Prestwood Afternoon WI. Resolutions meeting and Elizabeth Webster from Denman College. (See Wednesday 4 April)

Friday 4 May

Pot Luck Lunch in Holy Trinity Church Hall. (See Friday 2 March)

Saturday 5 May

Lee Common Methodist Church Annual Spring Fair. 10.30 am. to 12 noon. Plants, and Cakes available. All welcome.

WI Produce Stall. Forecourt of Great Missenden Library. From 9.30am

The information given is accurate to the best of our knowledge however we are not always informed of changes. If you find details are incorrect please email events@hp16.org.uk or write to the address on page 2.

WEEKLY, FORTNIGHTLY AND MONTHLY EVENTS

Sundays

Card making group 3.30pm. All welcome. Details: Alison 01494 866909

Mondays

Great Missenden Toddler Group. Weekly (including school holidays but excluding bank holidays). Great Missenden Baptist Church Hall. 10-11.30am. Details Rev Helen Baker 07795 404387 bakerhj@btinternet.com

Day time Book Group. Meets monthly. Details Val Deane 01494 862596. 10.30am

Pop-Up Kitchen 4-6pm every Monday in the Baptist Church Hall, Great Missenden. Details Rev Helen Baker 07795 404387 bakerhj@btinternet.com

Voice Band dynamic children's singing group for ages 7 to 13. Weekly 5-6pm Misbourne School, Great Missenden, Details: fiona@singers4all.com 0777 370 4233

Simply Walk. A gentle 30-45 minute walk every Tuesday morning at 10am. Meet at Great Missenden Memorial Hall. Free. Info: 01494 475367 or email: simplywalks@buckscc.gov.uk

Village Coffee Morning at the Memorial Hall, Great Missenden 10am-12noon. All welcome. Details Jennifer King 01494 865271.

Prestwood and Great Kingshill Age Concern Luncheon Club. Prestwood Village Hall. 1pm (Not 1st Tuesday of the month). Details: Joan Palmer 01494 863982.

SATB chamber choir meets every 3 weeks Tuesday evenings in Great Missenden. Informal auditions contact: 07773 704233 singers4allpopupchoir@gmail.com

Bridge Group. Fortnightly, Prestwood Village Hall 2 - 4pm. Details Stella Watts-Moore 01494 863201.

Wedge Wednesdays Prestwood baby & toddler group. 9.45-11.15am. Prestwood Village Hall.

Bible Study and Prayer. Fellowship Room, Baptist Church, Great Missenden. Term time 10 - 11.30am.

Great Missenden Library Opening hours Tuesday, Wednesday 9.30am - 5pm; Friday 9.30am - 6pm; Saturday 9.30am - 1pm; Sunday, Monday, Thursday and Public holidays - closed

Mobile library

Prestwood. Alternate Wednesdays. Prestwood Village Hall 2.45-3.45pm The Lee. Monthly on Fridays. Village Hall, 9.45 - 10.05 am Swan Bottom. Monthly on Fridays, Old Swan PH 10.15 - 10.35 am For information phone 0845 2303232. www.buckscc.gov.uk/leisure-and-culture/libraries/mobile-library-timetables/

Wednesdays (Contd)

All Voices Aloud Singing Group. (Term Time) Great Missenden Baptist Church 7.30pm. Details Helen 01494 715336. www.allvoicesaloud.com

Coffee in Damien Hall, 10.15am after Mass at The Immaculate Heart of Mary Church in Great Missenden at 9.30am.

Great Missenden Bridge Club every Wednesday. 7.30pm. Memorial Hall. Secretary 07778 119094.

The Missendens Badminton Club. Weekly during term time. 8 - 10pm social badminton. Prestwood Junior School. Details Mike 01494 865325.

Thursdays

Toddler Thursdays, Holy Trinity Church, Prestwood (Term time) 9.30-11.30am. Drop-In for carers and 0-5s. www.htprestwood.org.uk/toddlers

Lunch club in the Baptist Hall Great Missenden for over 60s. Details Julie Needle 01296 612843.

Lucy Clark Scottish Country Dance Club - every Thurs eve. Oldham Hall, Great Missenden. Details Liz Mitchell 07947000368 www.lucyclark.org.uk

Fridays

Link4Growth 1st Friday of the month. Networking to build community. Free entry. Missenden Abbey drop in for coffee 10-11.30am, http://link4growth.biz

1st Friday of the month. New Tricks - lunch club. Great Missenden Baptist Church. 11.30am. Contact 01494 837715. Details: www.greatmissendenbaptistchurch.com

3rd Friday of the month New Tricks afternoon tea. Great Missenden Baptist Church. 2.30pm. Details as New Tricks above.

Weekly Table Tennis. All abilities and ages welcome. Great Missenden Baptist Church. 2.30pm. Details as New Tricks above (see page 8).

Saturdays

1st Saturday of each month. Coffee morning. Lee Common Methodist Church 10.30am-12 noon

THE ROALD DAHL MUSEUM AND STORY CENTRE

Join us for storytelling, family workshops & trails this Easter

Chidders' Hour for 0 to 3s every Friday in term time

Great Missenden HP16 0AL | 01494 892192 roalddahl.com/museum
SHOP AND CAFÉ OPEN TO ALL, YOU DON'T HAVE TO BE A MUSEUM TICKET HOLDER TO VISIT.

THE ROALD DAHL MUSEUM AND STORY CENTRE

Events at The Roald Dahl Museum and Story Centre

The Museum, Shop and Café Twit are open 10am to 5pm Tuesday to Friday and 11am to 5pm Saturday and Sunday, plus Bucks half-term and bank holiday Mondays. More information about activities, including times and charges can be found on the website www.roalddahl.com/museum

Sat 24 February Rhythm, Rap and Rhyme with Neal Zetter
Sun 25 February Muddled Up Beasts

Fridays 2, 9, 16, 23 March. Chidders' Hour.

Sat 3 Mar. World Book Day Celebrations. Writing Hut Talks, make a Dirty Beast in the Crafty Kitchen, and follow a trail around the Museum * Hornswoggler Heads

Sat 10 March, Thursday 12,

Sun 18 March. Boggled Box Beasts

Sat 24 March. Mideous Masks

Fri 30 March, Tues 10 April. Awesome Aerial Art

Sat 31 Mar, Tues 3, Sun 8 April. Fly a Kicksy Kite

Sundays 1, 15 April. Fantabulous Flying Scarf

Mon 2 April. Songs of Flight with Megan and Owen

Wed 4, Thurs 12 April. Flight-tastic maps

Thurs 5, Friday 13 April. Crackling Clay Gremlins

Fri 6 April. Dave Pigeon.

Sat 7 April. Once Upon a Star.

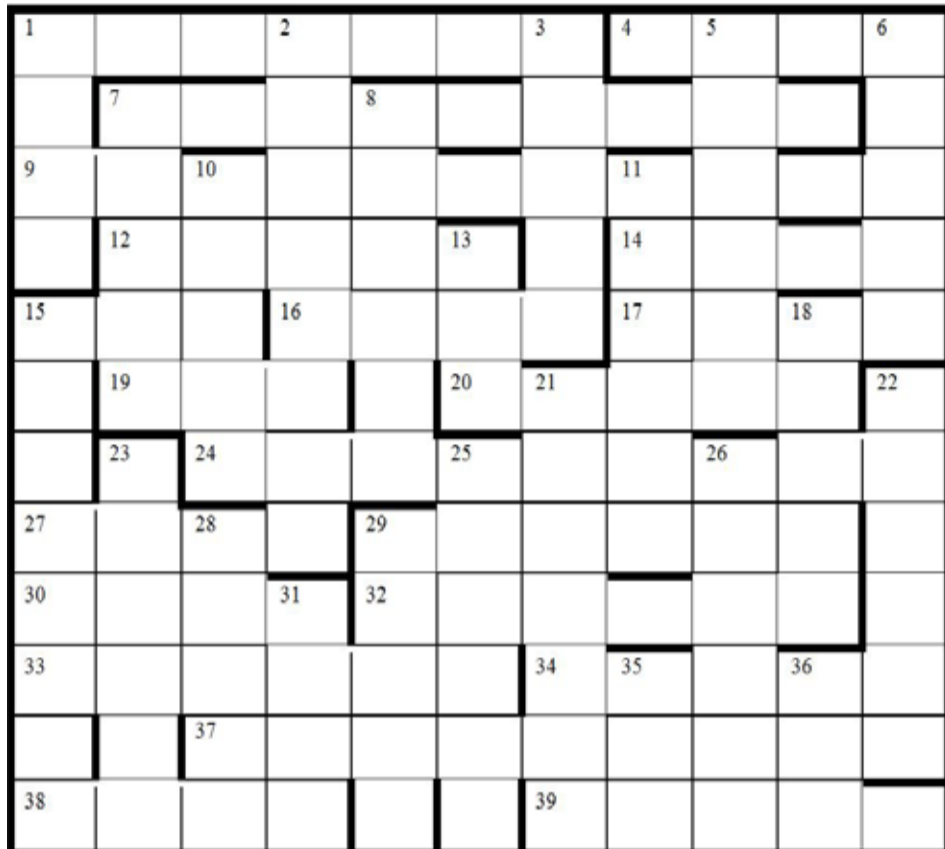
Sat 14 April. Discover Dahl's Archives

Events marked * are free for Museum visitors
The Roald Dahl Museum and Story Centre, 81 - 83 High Street, Great Missenden, Bucks, HP16 0AL Registered charity number 1085853 A company limited by guarantee number 4178505

SOURCE CROSSWORD NO. 53

“Long Distance Running” by Dialogos

Solvers should highlight ten singular answers that in their plurality have something in common.

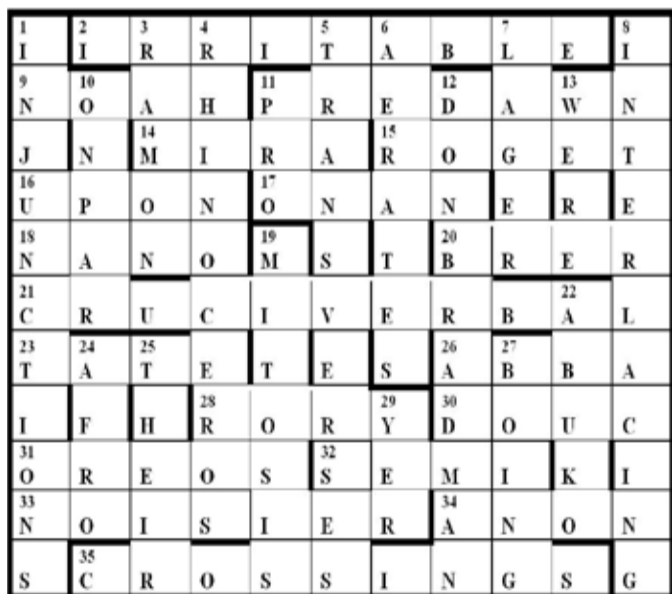


THEME: _____

When sending completed entries for crossword 53, please enter your name and address here:

send entries to :

HP16 - THE SOURCE, 6 CHEQUERS LANE, PRESTWOOD. HP169DW



Crossword 52 solution

‘Criss-cross for Christmas’

Congratulations to all those who succeeded in solving the crossword 52. Mr Clive Higman was the first out of the bag to become our winner.

Across

1. Urge on top brain (7)
4. Old red obscuring the blue, almost run (4)
7. Crumpled cars’ doors - what you do not expect to find on the motorway! (9)
- 9, 12. Film and book: new Dahl - “Felt So Lovely” (16, 4 words)
14. Wildly enjoyable time in carnival city before the start (4)
15. Born, name heretofore ends (3)
16. Trendy vests created in part by Saint Laurent, perhaps (4)
17. Small amount no longer used in Switzerland (4)
19. “The deuce” you could say as well (3)
20. Applaud entertainment (5)
24. Cockney - he has an offer to sell you something (9)
27. Tap part of gun that’s rubbish (4)
29. Sixties group reduced to just a pale reflection (6)
30. Fond hours regularly spent in the smell of Pittsburgh (4)
32. Poet about in Roman times (6)
33. Note place in surrounding area (6)
34. “Let it be” is rightly one, let it be ever so wrong (5)
37. Someone close to you, being rough (not good!), is reformed (9)
38. Take a lecherous look back at dancing (4)
39. It’s in a poor state when Chancellor of the Exchequer is not involved in magic (5)

Down

1. Being green? Environmentally, not hard crazy Liberal (4)
2. European evergreen phyla look strange lacking phosphorus (8)
3. Refuse to admit being over-size in doctor’s (5)
5. It’s hard with this rough open fabric to make hair-net (6)
6. Saw parts that are white in Zadie Smith’s 34 (5)
7. Trainee acted badly (5)
8. Such people are dwarves carrying spades (6)
10. He often collaborated with Mr Lerner making sloe wine with not a bit of sugar in (5)
11. Boozy Ferdinand “nonplussed” - a steady companion? (6)
13. The beginnings of such excellent Chardonnay! (3)
15. Cowmen are strange - with no trace of animals, stranger! (8)
18. Gang of workmen, European, employed in railway town (5)
21. Firesides provide warmth for homes, initially, right inside (7)
22. Sagittarius is shrewder (6)
23. Upper part of trunk to freeze - without this? (6)
25. Not quite having had an idea, however (6)
26. Bringing up decayed fish, took away net for repair (6)
28. Part of olden locks raised up into which the Misbourne flows (5)
29. Chief in Middle East has milk-drink by the sound of it (5)
31. Lire converted into Cambodian currency (4)
35. Nigerians living in Djibouti (3)
36. Trumpet for calling cattle in Norway with long useless ribbons on top (3)

♥ Great Missenden Bridge Club ♠

This is the strongest East/West hand seen in a long time. What a pity the bidding went wrong! What is the correct contract and how do you reach it?

East is dealer and opens 1 Spade pleased with 18 points. West has a very strong hand particularly facing partner who has opened. West bids straight to 4 No Trumps asking for aces. Playing the Blackwood convention, East responds 5 Spades with 3 Aces. West bids 5NT, East responds 6 Diamonds for 1 King. West bids 6 Hearts.

At this point, I as East felt we should be in a higher contract but didn’t know whether West was missing an honour card in Hearts. I passed.

West as declarer made all 13 tricks – the same as every other declarer.

At another table, the bidding went 1S, 4NT as above. Playing, the Roman Card Key convention, East responds 5 Clubs for 0 or 3 Aces. West bids 6H based on

Info from the secretary: 7778119094

North		South	
♠ J 8 5 3	♥ 2	♠ 7 4	♥ 9 3
♦ Q 5	♣ K 10 5 4 3 2	♦ 9 4 3 2	♣ Q J 9 8 7
West		East	
♠ 10	♥ A K Q J 10 7 6 5 4	♠ A K Q 9 6 2	♥ 8
♦ K 10 6	♣ -	♦ A J 8 7	♣ A 6

the opening values in East. Now East knows to bid on to 7NT because West must have good hearts for the 6H bid and has the 8 of hearts to get over to that hand.

7NT is the correct contract as it scores better than 7 Hearts. This was bid at only one table. The other tables bid 7 Hearts (3 times), 6 Hearts and a measly 4 Hearts!

www.bridgewebs.com/gtmissenden

Last time we asked, “Where and what this is?”

Many thanks for a lovely response from one reader in the form of a poem:

*Tree of stars, tree of lights,
Fruit of lives well lived, well loved.
Memories shining through the years,
Lights that guide and comfort bring.
The tree stands tall, though rooted here,
Leaves us to move, live well, love well.*



Light up a life lights at Prestwood Village Hall
Another rather different type of response came in too... based on the 12 days of Christmas

On my first day in Prestwood my true love sent to me a partridge from Sainsbury

On my second day in Prestwood my true love sent to me two fish and chips and a partridge from Sainsbury

On my third day in Prestwood my true love sent to me three of Daisies roses, two fish and chips and a partridge from Sainsbury

Subsequent verses follow the pattern adding a new gift each time:

- | | |
|-----------------------|-------------------------|
| 4 buns from Zoran | 5 TWINKLING BOUGHS |
| 6 Chequers shandies | 7 Peterley apples |
| 8 Chops from Stirrets | 9 Plants from Hildreths |
| 10 Coop chocolates | 11 Pharmacy aspirins |
| 12 Wye Country houses | |

Taken from the Prestwood edition of local songs. The TWINKLING BOUGHS were outside the village hall.

So where & what is this in HP16?

Please send us your ideas!



The Source Youth

Happy New Year! 2018

ANOTHER type of Prestwood Rocks

- Mark Pattinson



Exciting Rock & Pop After School Clubs for Kids & Teens in PRESTWOOD !!!

Every week, we teach children to sing and play guitar, bass & drums - and then perform as a band. All ability levels welcome, from first-timers to experienced. Fantastic venue...

TRY A FREE TASTER SESSION

<http://bucks.therockproject.com/contact-us/?reason=taster>
Fun guaranteed !!

Find out further details here:

www.bucks.therockproject.com
bucks@therockproject.com
07545 828590

Helping the Homeless

On any given night over 4,000 people sleep on our streets. StreetLink is a website, mobile app and phone line that enables members of the public to alert local support services when they see someone sleeping rough. Since launching in 2012, StreetLink has already helped over 3000 people away from the streets and into temporary accommodation.

How does it work?

If you spot a homeless person and you are concerned for their welfare, (especially in this freezing weather) all you have to do is go to the StreetLink website, app or call their phonenumber and leave a report as to where the person is you want to help and a description of what they look like. Those responsible for looking out for the homeless in the area of the homeless person you've reported will then receive your report and see what they can do to help. StreetLink will also keep you informed on any actions taken.

Be sure to also check out the StreetLink Community for updates on your alerts and the service. You can find updates to your alert by logging in to the StreetLink mobile app or by logging in to your StreetLink account at www.streetlink.org.uk



Connecting rough sleepers to local services
www.streetlink.org.uk

Teen Tennis - Theo, 15 yrs

I've been playing tennis for around five years and I have learned a lot from it. Firstly tennis! Over time I have definitely gotten better which has helped my fitness and confidence and getting into the weekly routine of sessions has given me something to look forward to. Even in the coldest weeks of winter when I didn't really want to go, playing with my friends and scoring the occasional winning point against them has given me a real sense of achievement and pride. Secondly, tennis is a great way to de-stress. As someone currently doing their GCSEs it's great to have somewhere where I can just forget about the arduous (and seemingly never ending) task of revision and exams and just focus on my technique.

Prestwood Tennis Club has been a great place for people of all abilities to play. At teen tennis I have genuinely made friends that I never would have met otherwise. Everyone gets on with the coaches who make every lesson fun without fail, especially Head Coach Janko who is always there to offer words of encouragement or advice. There are a lot of pressures in life, some good, most bad and sometimes these pressures seem to come from all angles; school, friends, parents, the media, everywhere! It's important to have an outlet to de-stress and have fun, for some it could be karate, dancing, swimming but mine happens to be tennis! And I love it!



Find out more here: www.prestwoodtennisclub.co.uk
You can find information about FREE introductory lessons and trials!

Time for a Breath of Fresh Air

As you may have seen, Chiltern Rangers are taking on some woodland restoration at Penn Wood, Penn, Buckinghamshire for our friends at The Woodland Trust. We have cut down some of the regenerating western hemlock, which is letting sunlight pour into the woods. This is great for the heather, foxgloves and invertebrates that will nectar on them later in the year. (The hemlock which is not native to Britain, keeps all the light out so nothing else grows.)



The habitat piles we create have already attracted wrens, robins and dunnocks who were on the lookout for an easy meal!

Thanks to the 14 volunteers who came along to help from Daisy aged 10 to Dave and the Derek's who are a little older than that - a true community session. Thanks too for the help from staff from @RedKiteCommunityHousing during #gogreen-week.

We have two sessions left and welcome helpers to both.
Meet at 10am in the Penn St church car park on Sat 24th Feb and Thurs 6th March

You can find out more about Chiltern Rangers here: www.chilternrangers.co.uk

The Source Youth

Happy New Year! 2018

It's a kind of Magic

Hi all!

I'm writing this on behalf of a Young Enterprise company I am part of, called "White Magic" (Our team includes: Alice Lindsay, Georgia Penter, Ellie Freeman, Lucy Hobbs, Ellie Halling, Louise Patten, Mia Devon-Lowe, Anna McVie, Laura Derry and Verity McDonald.)

We sell magical wish jars that enable you, or a loved one, to follow a magical spell and make a wish. Our company has evolved significantly over the past couple of months, selling out at the Marlow Late Night shopping and other events such as Bourne End Lights and Beaconsfield Festival of Lights over the Christmas period.

We've developed an "Adopt a Fairy" jar, and we also offer a bulk party bag range (without the jar)

Further info can be found here:
 website: whitemagicjars.weebly.com/
 instagram: @whitemagicjars
 email: whitemagicjars@gmail.com

So please, get in touch for an original, handmade, meaningful jar for an unusual and unique gift!



Images from top, White Magic's logo, jars ready and prepared, selling more wish jars at Eden shopping centre.

Have a butcher's at this...

Most of you will already have known about and spotted Great Missenden High Street and the Buryfield in the Richmond sausage advert. (Images from the ad below in case you haven't seen it.)



Well, there's a new meaty competitor for the HP16 school of fame. Joe Barnes, former local resident and Roald Dahl Museum storyteller can now be seen in a new feathery guise as a chicken who is jealous of the fact that a family have chosen to eat pork instead of chicken for their evening meal in an advert for Love-PorkUK. Obvious flaws in the storyline aside, we're enjoying seeing him cluck his stuff on a regular basis be it on the TV in Sprinters Gym or in the ad-breaks during a stint of Saturday night telly viewing.



He's also done some things for BBC3, but they don't fit the meat theme... (We'll save them for another Youth Source claim to fame spot!)

Always be prepared for Adventure!

If your child has nothing to do on a Friday night between 7:00pm to 9:15pm, Prestwood Scouts have plenty of room. For boys and girls between the age of 10yrs to 14yrs.

In Scouts each week varies. One week you might be cooking on a open fire. The following week you're hiking around the Chilterns.

If you have been thinking about it and would like more info.

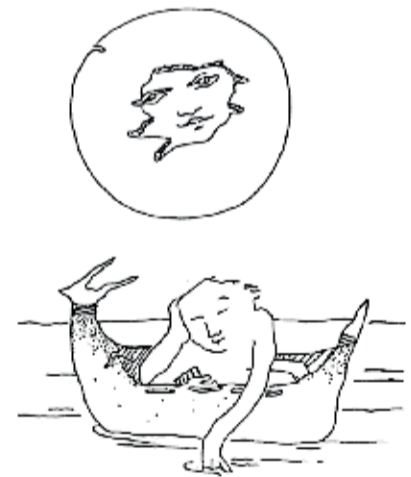
Email me on:

brockett8@hotmail.com or call 07702852630.



Go on, you know you want to....

Scouts is a great place to learn self respect, respect for others, caring for belongings, teamwork, opportunities to further existing skills, or discover a skill or an activity that they didn't think they had. But more importantly it's a safe, fun and adventurous environment which helps to increase self confidence and gives them the strength to take the world on when they are older and achieve amazing things.



As we were treated to a Super Blue Blood Moon, we thought we would include these illustrations by Sumishta Brahm: left - Dear Moon and right - Moon over water.

If you saw this spectacular sight and took pictures, or created an artwork - do send them to us!

We need your help!



We need your news!

Email hpl6thesource@yahoo.co.uk with your film and music reviews, when and where your band is going to be playing, photographs and illustrations, poetry and fiction.

This paper can reach over 10,000 people - Imagine how long it would take to build an audience that size on social media!