



**Great Missenden & Prestwood Revitalisation Group**  
incorporating Ballinger, South Heath and Heath End

Annual General Meeting  
5<sup>th</sup> October 2021  
via Zoom



Cycling update by Cllr Mike Johnstone



# Great Missenden & Prestwood Revitalisation Group

incorporating Ballinger, South Heath and Heath End

---



## Cycling update

Since 2019, there have been two main developments:

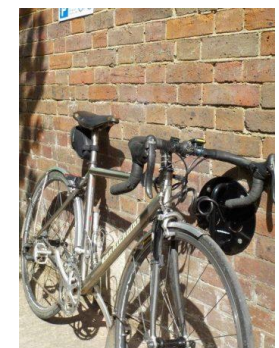
1) The Misbourne Greenway

2) Further cycle parking proposed for Great Missenden

---

Cycle parking has been installed in Prestwood car park and The Coop.

Also proposed to serve Prestwood Village Hall – waiting to hear decision







# Great Missenden & Prestwood Revitalisation Group

incorporating Ballinger, South Heath and Heath End



## 1) The Misbourne Greenway

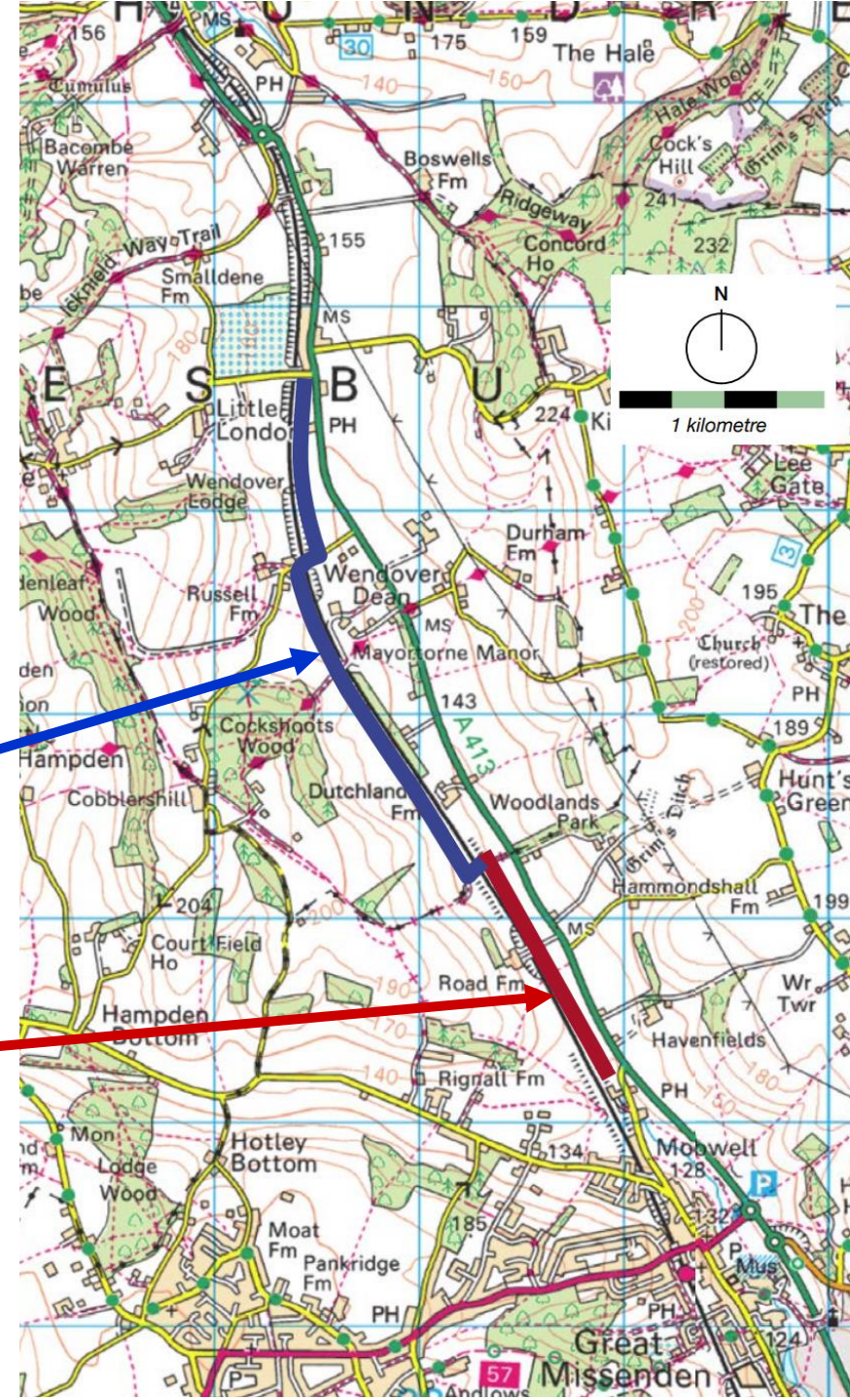
from Wendover station to Great Missenden station  
(Aim: eventually from Aylesbury to Uxbridge)

Two of three sections – 4.2km – approved in Jan 2021  
with conditions

**1 -Dunsmore Lane, Wendover to Mapridge  
Green Lane**

**2- Mapridge Green Lane to Black Horse Pub,  
Aylesbury Road, Great Missenden**

3- Final section to GM station is under discussion

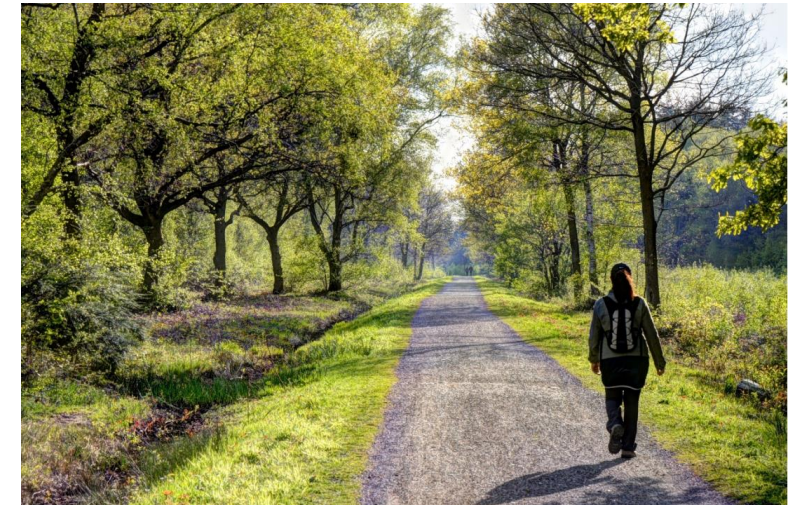






# Great Missenden & Prestwood Revitalisation Group

incorporating Ballinger, South Heath and Heath End



## Examples



Waddesdon Greenway



The Exe path running on spare railway land to Exmouth





**Great Missenden & Prestwood Revitalisation Group**  
incorporating Ballinger, South Heath and Heath End

## The Misbourne Greenway - continued

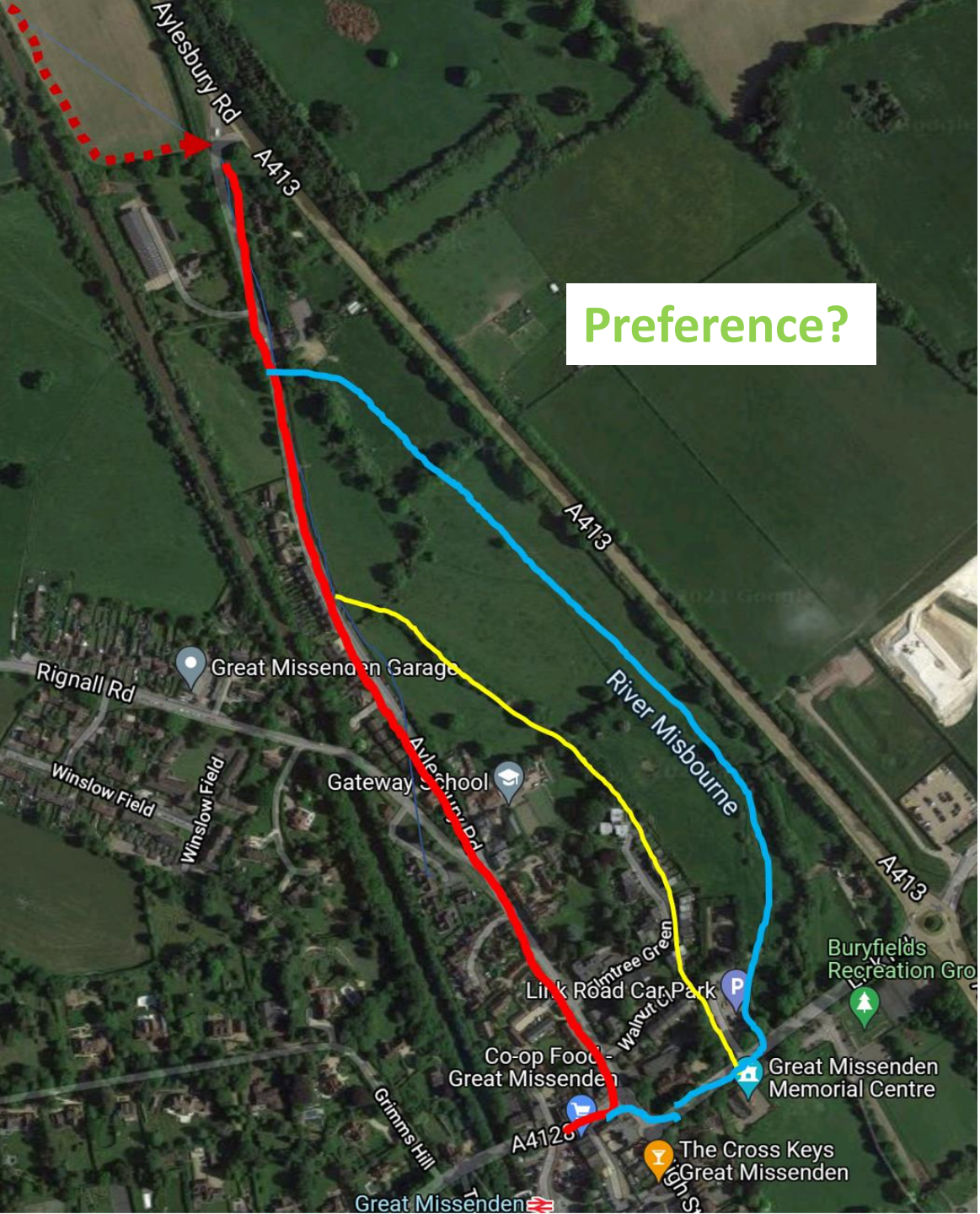
3- Final section to GM station is under discussion

.....➔ Greenway from Dunsmore Lane

**Option 1: Existing Aylesbury Road**

**Option 2: Footpath from Black Horse via Buryfield House to Link Road**

**Option 3: Path behind Gateway School and Elmtree Green**







Great Missenden & Prestwood Revitalisation Group  
incorporating Ballinger, South Heath and Heath End



Cycling update

## 2) Further cycle parking proposed for Great Missenden

An intra-parish group involving:  
GMPRG, GMVA, GMPC & BREEZE  
is seeking to improve the look of the Great Missenden High Street for residents and visitors

- such as Great Missenden in Bloom
- additional noticeboards
- and more benches and cycle parking in the 4 locations shown







# Great Missenden & Prestwood Revitalisation Group

incorporating Ballinger, South Heath and Heath End



## Cycling update

GMVA diagrams and montage for the four improvement areas

### 1. Area in front of the McCarthy and Stone development



### 2. Area in front of the Fire Station & Cage



Cycle racks behind the bench





Cycling update

# Great Missenden & Prestwood Revitalisation Group

incorporating Ballinger, South Heath and Heath End

## 3. Area next to the Library



## 4. Area on the High street side of Abbeyfield House



Styles ?







**Great Missenden & Prestwood Revitalisation Group**  
incorporating Ballinger, South Heath and Heath End



Cycling update

Thank you